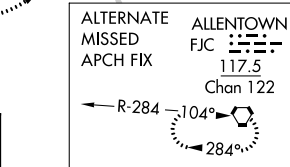


ILS or LOC RWY 13

MISSED APPROACH: Climb to 1300 then climbing left turn to 3000 on heading 060° and on SBJ VOR/DME R-295 to LIZZI INT and hold.

CLNC DEL
124.05 257.95



ELEV 394	D	TDZE 386	
----------	----------	----------	--

135° 6.2 NM from FAF

TWR 536 ±

5800 X 1.50

7599 X 1.50

REIL Rwy 24 and 31

HIRL Rwy 6-24 and 13-31

FAF to MAP 6.2 NM					
Knots	60	90	120	150	180
Min:Sec	6:12	4:08	3:06	2:29	2:04