

LOC/DME	I-RMN	APP CRS	Rwy Idg	5000
108.75		329°	TDZE	196
Chan 24 (Y)			Apt Elev	212

ILS or LOC RWY 33
STAFFORD RGNL (RMN)

▽ If local altimeter setting not received, use Shannon, Fredericksburg, VA altimeter setting and increase all DH/MDAs 40 feet.

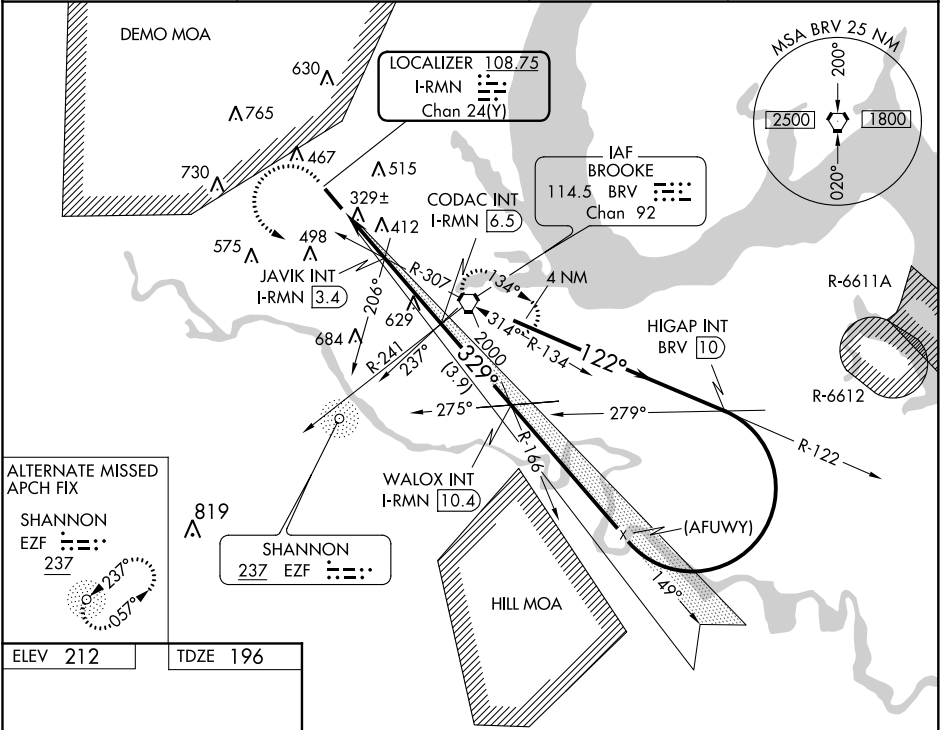
△NA Inoperative table does not apply to S-ILS 33 and to S-LOC Cats B and C. DME or ADF required.

MALS

A

MISSED APPROACH: Climb to 600 then climbing left turn to 2000 direct BRV VORTAC and hold.

AWOS-3 126.325	POTOMAC APP CON ★ 127.05 290.375	GCO 135.075	UNICOM 122.725 (CTAF) ①
-------------------	-------------------------------------	----------------	-----------------------------------



ELEV 212 TDZE 196

REIL Rwy 15 **①**
HIRL Rwy 15-33 **①**

FAF to MAP 5.5 NM

Knots 60 90 120 150 180
Min:Sec 5:30 3:40 2:45 2:12 1:50

600 2000 BRV

*LOC only

JAVIK INT I-RMN 3.4

CODAC INT I-RMN 6.5

WALOX INT I-RMN 10.4

HIGAP INT BRV 10

3000

GS 3.00° TCH 46

† 980 when using Shannon, Fredericksburg, VA altimeter setting.

CATEGORY	A	B	C	D
S-ILS 33	396- ³ / ₄ 200 (200- ³ / ₄)			
S-LOC 33	580- ³ / ₄ 384 (400- ³ / ₄)			580-1 ¹ / ₄ 384 (400-1 ¹ / ₄)
CIRCLING	720-1 508 (600-1)	740-1 528 (600-1)	840-1 ³ / ₄ 628 (700-1 ³ / ₄)	860-2 648 (700-2)