

WAAS CH 48843 W09A	APP CRS 092°	Rwy Idg 4300 TDZE 489 Apt Elev 494
--	------------------------	---

RNAV (GPS) RWY 9

LOUISA COUNTY/FREEMAN FIELD (LKU)

RNP APCH.

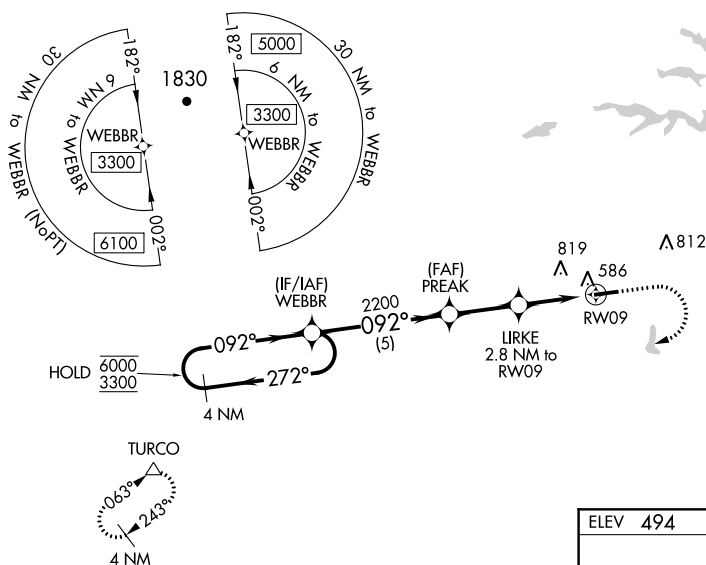
- T** Circling NA north of Rwy 9-27. Rwy 9 helicopter visibility reduction below $\frac{3}{4}$ SM NA.
- A** For uncompensated Baro-VNAV systems, LNAV/VNAV NA below -15°C or above 54°C .
- When local altimeter setting not received, use Orange altimeter setting and increase LPV DA to 775 feet, LNAV/VNAV DA to 784 feet and MDA 40 feet; increase LPV and LNAV/VNAV visibility $\frac{1}{8}$ SM. Baro-VNAV and VDP NA when using Orange altimeter setting.

MISSED APPROACH: Climb to 1000 then climbing right turn to 3300 direct TURCO and hold.

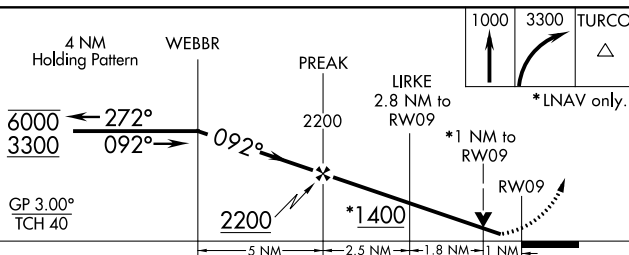
AWOS-3
119.475


POTOMAC APP CON
132.85 323.125

UNICOM
122.975 (CTAF) 



ELEV 494		TDZE 489
----------	--	----------



CATEGORY	A	B	C	D
LPV DA	739- ³ / ₄	250 (300- ³ / ₄)		NA
LNAV/ VNAV DA	748- ³ / ₄	259 (300- ³ / ₄)		NA
LNAV MDA	840-1	351 (400-1)		NA
 CIRCLING	900-1 406 (500-1)	960-1 466 (500-1)		NA

REIL Rwy 9 and 27 **L**
MIRL Rwy 9-27 **L**