

WAAS CH 58318 W27A	APP CRS 272°	Rwy Idg 4300 TDZE 494 Apt Elev 494
--	------------------------	---

RNAV (GPS) RWY 27

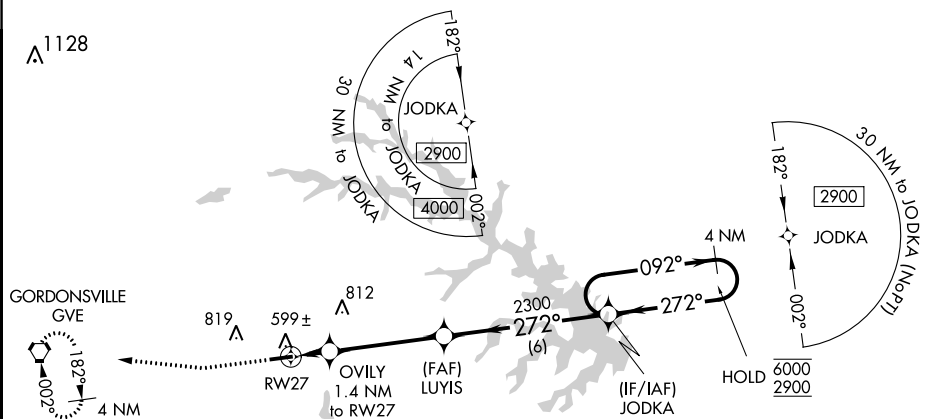
LOUISA COUNTY/FREEMAN FIELD (LKU)

RNP APCH.

- T** Circling NA north of Rwy 9-27. Baro-VNAV NA when using Orange
A altimeter setting. For uncompensated Baro-VNAV systems, LNAV/VNAV NA
below -15°C or above 54°C. When local altimeter setting not received,
use Orange altimeter setting and increase all DA to 780 feet and all MDA 40 feet
and increase LPV and LNAV/VNAV visibility $\frac{1}{8}$ SM.

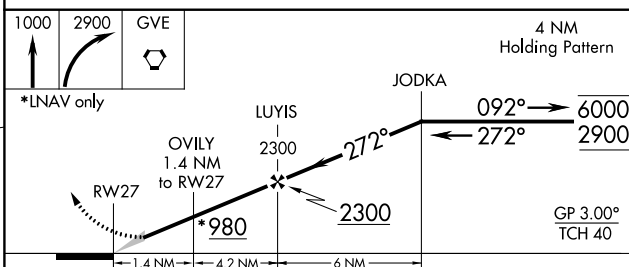
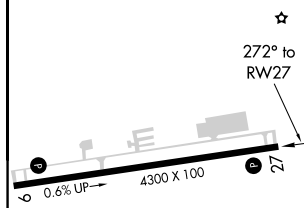
MISSED APPROACH: Climb to 1000 then climbing right turn to 2900 direct GVE VORTAC and hold, continue climb-in-hold to 2900.


AWOS-3 119.475	POTOMAC APP CON 132.85 323.125	UNICOM 122.975 (CTAF) 0
--------------------------	--	-----------------------------------



NE-3, 03 DEC 2020 to 31 DEC 2020

ELEV 494		TDZE 494
----------	--	----------



CATEGORY	A	B	C	D
LPV DA	744- ³ / ₄	250 (300- ³ / ₄)		NA
INAV/ VNAV DA	744- ³ / ₄	250 (300- ³ / ₄)		NA
INAV MDA	860-1	366 (400-1)		NA
 CIRCLING	900-1 406 (500-1)	960-1 466 (500-1)		NA

REIL Rwy 9 and 27 **L**
MIRL Rwy 9-27 **L**

LOUISA, VIRGINIA
Amdt 2 15AUG19

LOUISA COUNTY/FREEMAN FIELD (LKU)

38°01'N - 77°58'W

RNAV (GPS) RWY 27