

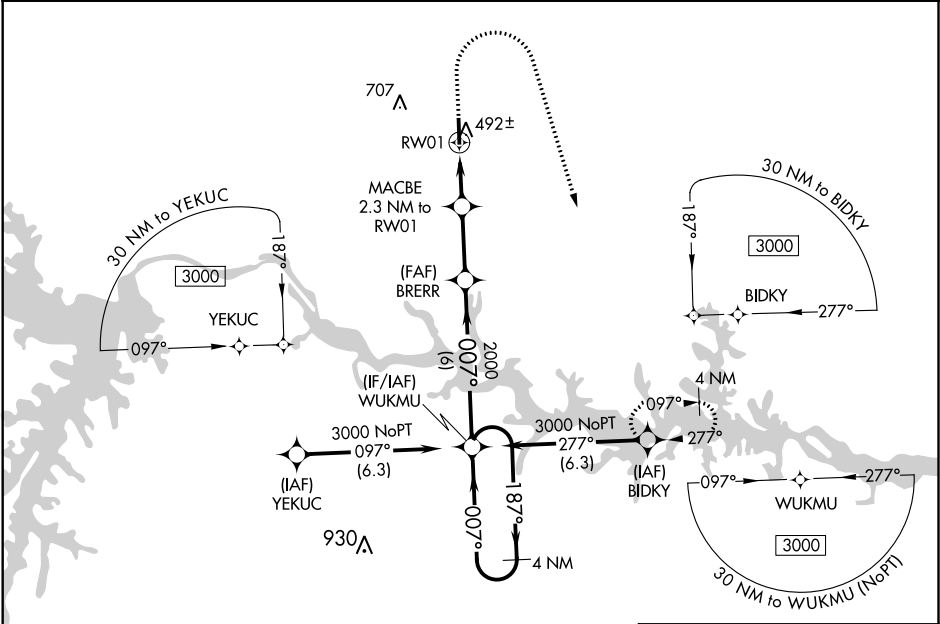
WAAS CH <b>63118</b> <b>W01A</b>	APP CRS <b>007°</b>	Rwy Idg TDZE <b>417</b> Apt Elev <b>441</b>
--	------------------------	---

RNAV (GPS) RWY 1

MECKLENBURG-BRUNSWICK RGNL (AVC)

<div><div></div><div>For uncompensated Baro-VNAV systems, LNAV/VNAV NA below -15°C (5°F) or above 54°C (130°F). DME/DME RNP-0.3 NA. Rwy 1 helicopter visibility reduction below ¾ SM NA. For inop ALS, increase LPV all visibility to 1½ SM.</div></div>	<div>ODALS</div> <div><div></div><div></div></div>	<div>MISSED APPROACH:</div> <div>Climb to 900 then climbing right turn to 3000 direct BIDKY and hold.</div>
--	--	---

AWOS-3 <b>127.525</b>	WASHINGTON CENTER <b>118.75 377.1</b>	UNICOM <b>122.8 (CTAF) 0</b>
--------------------------	--	---------------------------------



ELEV 441		TDZE 417	
4 NM Holding Pattern		VGSi and RNAV glidepath not coincident (VGSi Angle 3.00/TCH 40).	
WUKMU		BRERR	
3000 ← 187°		MACBE 2.3 NM to RW01	
GP 3.00° TCH 51		* 1.1 NM to RW01	
007° →		RW01	
2000		* 1160	
6 NM		2.6 NM	
1.2 NM		1.1 NM	
CATEGORY	A	B	C
LPV DA	714-1	297 (300-1)	
LNAV/VNAV DA	692-1	275 (300-1)	
LNAV MDA	760-1	343 (400-1)	
CIRCLING	860-1 419 (500-1)	900-1 459 (500-1)	1060-1¾ 619 (700-1¾)
		1060-2 619 (700-2)	
		MIRL Rwy 1-19 0	
		REIL Rwy 1 and 19 0	

NE-3, 03 DEC 2020 to 31 DEC 2020

NE-3, 03 DEC 2020 to 31 DEC 2020