

APP CRS	Rwy Idg	3200
255°	TDZE	464
	Apt Elev	464

RNAV (GPS) RWY 26

ORANGE COUNTY (OMH)

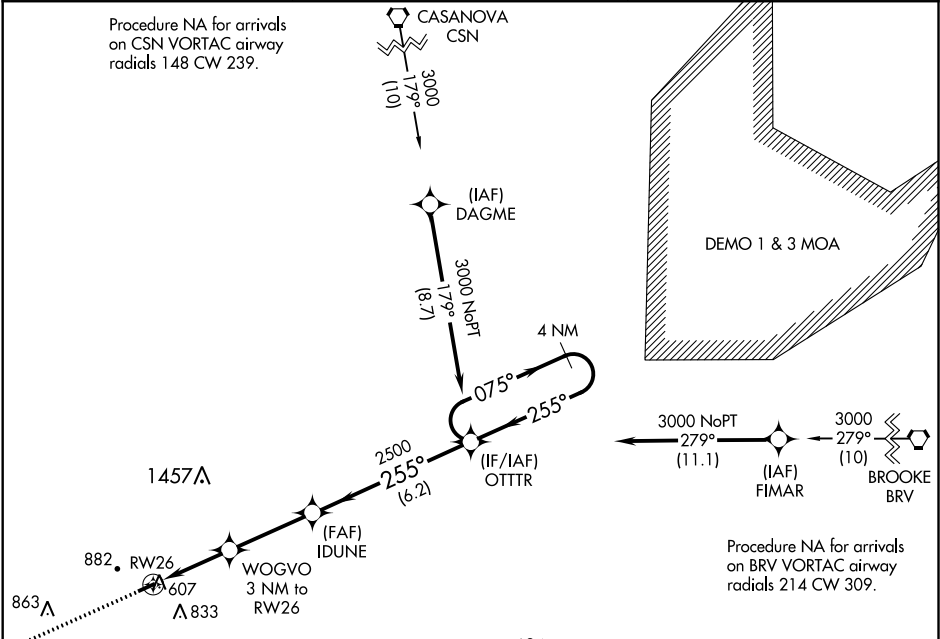
⚠

⚠

DME/DME RNP-0.3 NA. When local altimeter setting not received, use Charlottesville altimeter setting and increase all MDA 80 feet. Rwy 26 helicopter visibility reduction below 1 SM NA. Straight-in Rwy 26 NA at night, Circling Rwy 26 NA at night.

MISSED APPROACH:
Climb to 3100 direct ZAVRO and hold.

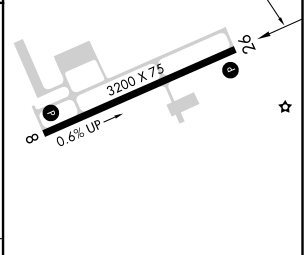
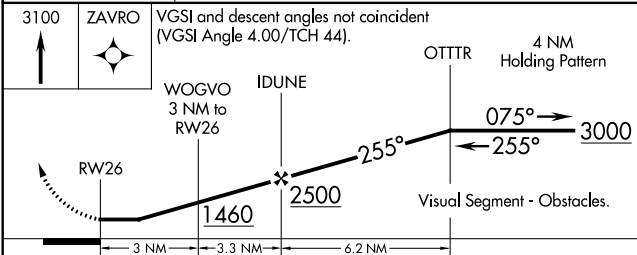
AWOS-3 118.075	POTOMAC APP CON 132.85 323.125	UNICOM 122.8 (CTAF) 0
-------------------	-----------------------------------	--------------------------



MISSED APCH FIX
ZAVRO
4 NM

ELEV 464

TDZE 464



CATEGORY	A	B	C	D
LNAV MDA	980-1	516 (600-1)	NA	NA
CIRCLING	1300-1¼	836 (900-1¼)	NA	NA

MIRL Rwy 8-26 0
REIL Rwy 8 and 26 0

NE-3, 03 DEC 2020 to 31 DEC 2020

NE-3, 03 DEC 2020 to 31 DEC 2020