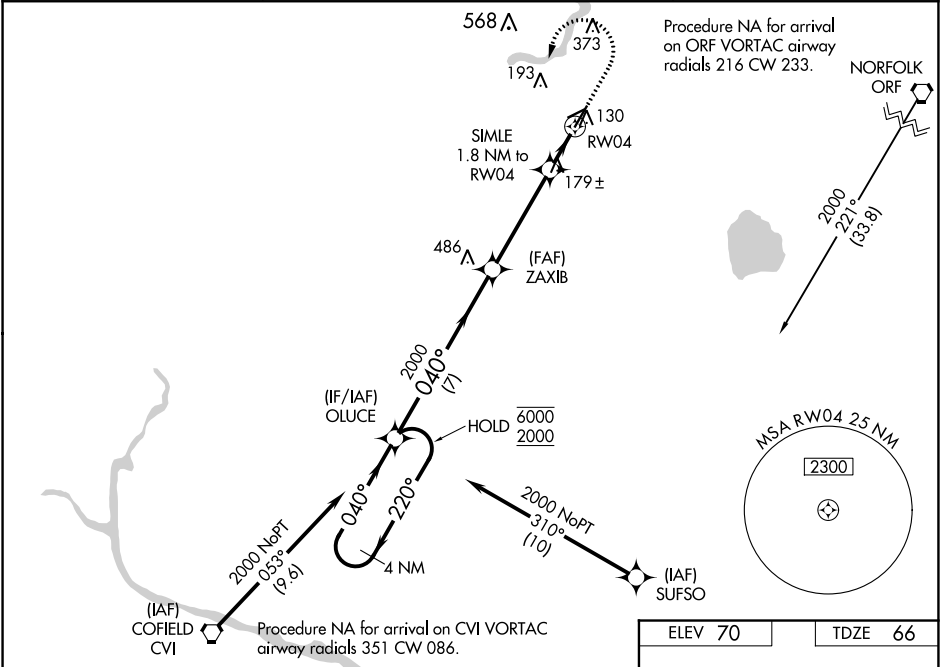


WAAS CH <b>65824</b> <b>W04A</b>	APP CRS <b>040°</b>	Rwy Idg TDZE <b>66</b> Apt Elev <b>70</b>	<b>5007</b>
--	------------------------	---	-------------

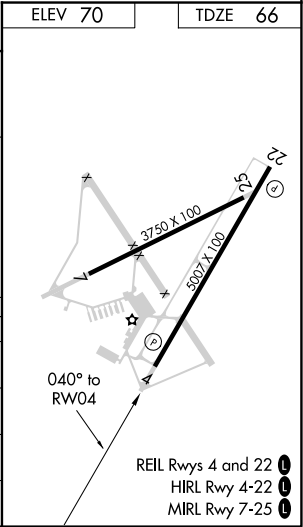
RNAV (GPS) RWY 4

SUFFOLK EXECUTIVE (SFQ)

RNP APCH. <div>For uncompensated Baro-VNAV systems, LNAV/VNAV NA below -15°C or above 54°C.</div>		MISSED APPROACH: Climb to 600 then climbing left turn to 2000 direct OLUCE and hold.
AWOS-3 <b>119.375</b>	NORFOLK APP CON <b>127.9 269.425</b>	UNICOM <b>122.7 (CTAF)</b>



VGSI and RNAV glidepath not coincident (VGSI Angle 3.00/TCH 39).				
4 NM Holding Pattern				
OLUCE				
ZAXIB				
SIMLE 1.8 NM to RW04				
*1.1 NM to RW04				
*680				
7 NM, 4.1 NM, 0.7, 1.1				
CATEGORY	A	B	C	D
LPV DA		322-7/8	256 (300-7/8)	
LNAV/VNAV DA		474-1 3/8	408 (500-1 3/8)	
LNAV MDA		440-1	374 (400-1)	
CIRCLING	500-1 430 (500-1)	560-1 490 (500-1)	680-1 3/4 610 (700-1 3/4)	680-2 610 (700-2)



NE-3, 03 DEC 2020 to 31 DEC 2020

NE-3, 03 DEC 2020 to 31 DEC 2020