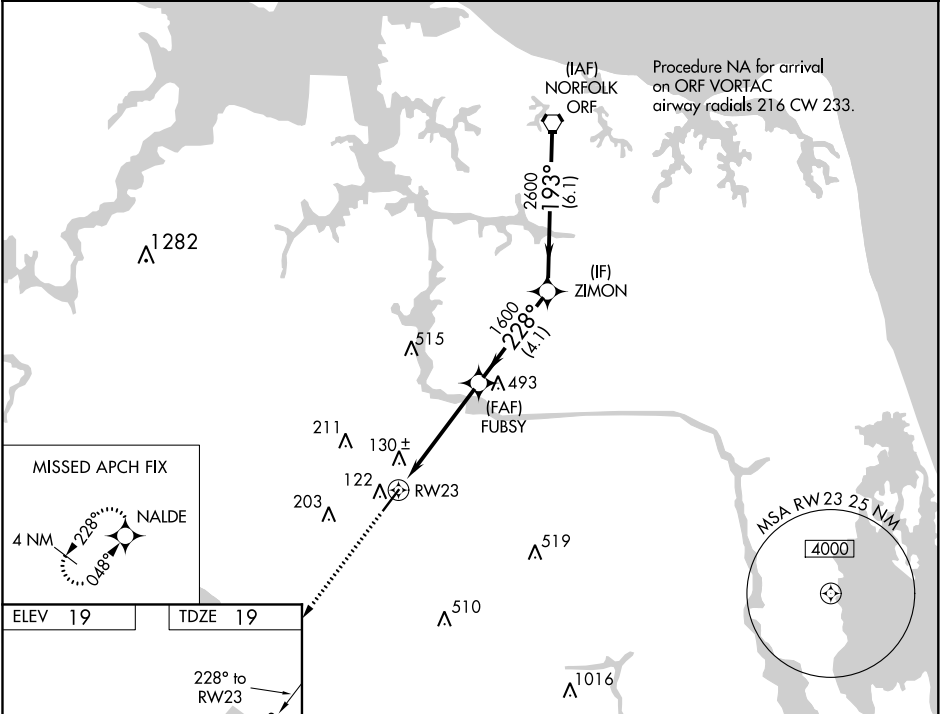


WAAS CH 65922 W23A	APP CRS 228°	Rwy Idg TDZE Apt Elev	5500 19 19
--	------------------------	-----------------------------	---------------------------------------

RNAV (GPS) RWY 23
CHESAPEAKE RGNL (CPK)

RNP APCH. ▼ ▲ Rwy 23 helicopter visibility reduction below 1 SM NA. When local altimeter setting not received, use Norfolk Intl altimeter setting and increase all DA 36 feet and all MDA 40 feet. Baro-VNAV and VDP NA with Norfolk Intl altimeter setting. For uncompensated Baro-VNAV systems, LNAV/VNAV NA below -15°C or above 43°C.		MISSED APPROACH: Climb to 2000 direct NALDE and hold.	
AWOS-3 123.675	NORFOLK APP CON 118.9 353.7	GCO 135.075	UNICOM 123.075 (CTAF) 0



ELEV 19 TDZE 19		228° to RW23	
2000 NALDE		VGSI and RNAV glidepath not coincident (VGSI Angle 3.00/TCH 42).	
*LNAV only		ORF VORTAC	
*1.3 NM to RW23		3000	
RW23		GP 3.00° TCH 56	
1.3		3.5 NM	
CATEGORY		A B C D	
LPV DA		311-1 292 (300-1)	
LNAV/VNAV DA		312-1 293 (300-1)	
LNAV MDA		480-1 461 (500-1) 480-1 3/8 461 (500-1 3/8)	