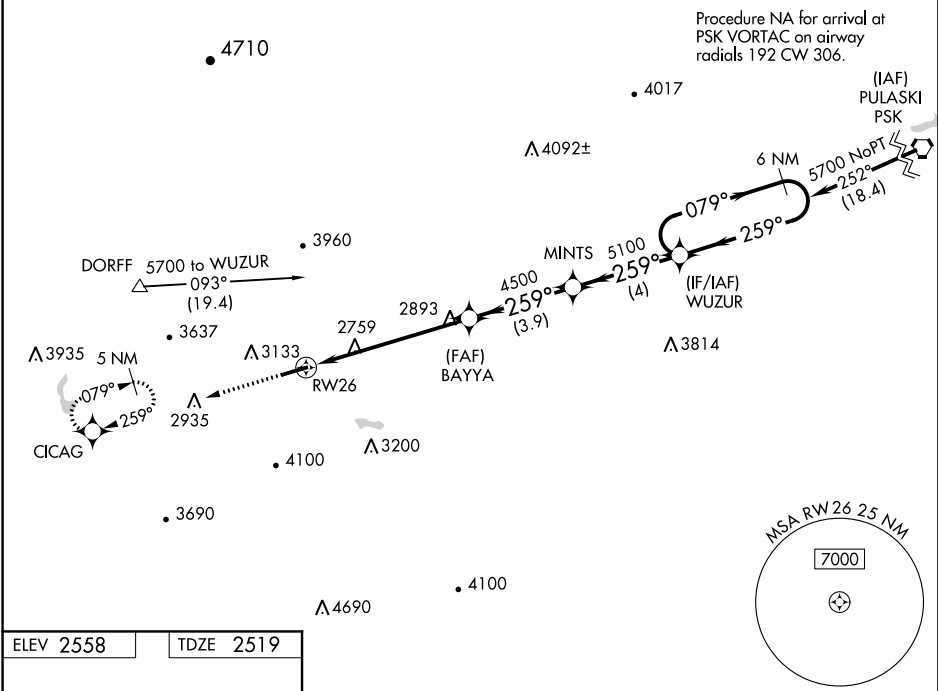


WAAS CH <b>72802</b> <b>W26A</b>	APP CRS <b>259°</b>	Rwy Idg TDZE Apt Elev	<b>5252</b> <b>2519</b> <b>2558</b>
--	------------------------	-----------------------------	---

**RNAV (GPS) RWY 26**  
MOUNTAIN EMPIRE (MKJ)

<p><b>V</b> For uncompensated Baro-VNAV systems, LNAV/VNAV NA below -20°C (-4°F) or above 54°C (130°F). Circling NA north of Rwy 8-26. Rwy 26 helicopter visibility reduction below ¾ SM NA. DME/DME RNP-0.3 NA.</p>	<p><b>MISSED APPROACH:</b> Climb to 6200 direct CICAG and hold, continue climb-in-hold to 6200.</p>
--	---

AWOS-3 <b>123.875</b>	ATLANTA CENTER <b>127.85 269.3</b>	UNICOM <b>122.7 (CTAF) 0</b>
--------------------------	---------------------------------------	---------------------------------



ELEV 2558	TDZE 2519
-----------	-----------

**6200** **CICAG**

VGSI and RNAV glidepath not coincident (VGSI Angle 3.75/TCH 47).

6 NM Holding Pattern

**WUZUR**

**GP 3.00° TCH 51**

**5700**

**5100**

**4500**

**4500**

**4.6 NM**

**3.9 NM**

**4 NM**

**1.5 NM**

**1.5 NM to RW26**

**BAYYA**

**MINTS**

**259° to RW26**

**079°**

**259°**

**5252 X 75**

**1.1% UP**

**2598**

**REIL Rws 8 and 26**

**MIRL Rwy 8-26 0**

CATEGORY	A	B	C	D
LPV DA	3096-2	577 (600-2)		NA
LNAV/VNAV DA	3159-2½	640 (700-2½)		NA
LNAV MDA	3140-1	621 (600-1)	3140-1¾ 621 (600-1¾)	NA
<b>C</b> CIRCLING	3260-1	702 (800-1)	4440-3 1882 (1900-3)	NA

NE-3, 03 DEC 2020 to 31 DEC 2020

NE-3, 03 DEC 2020 to 31 DEC 2020