

WAAS CH <b>56221</b> <b>W33A</b>	APP CRS <b>331°</b>	Rwy Idg TDZE Apt Elev	<b>5500</b> <b>217</b> <b>236</b>
--	------------------------	-----------------------------	---

RNAV (GPS) RWY 33

RICHMOND EXECUTIVE-CHESTERFIELD COUNTY (F'CI)

▼

▲ NA

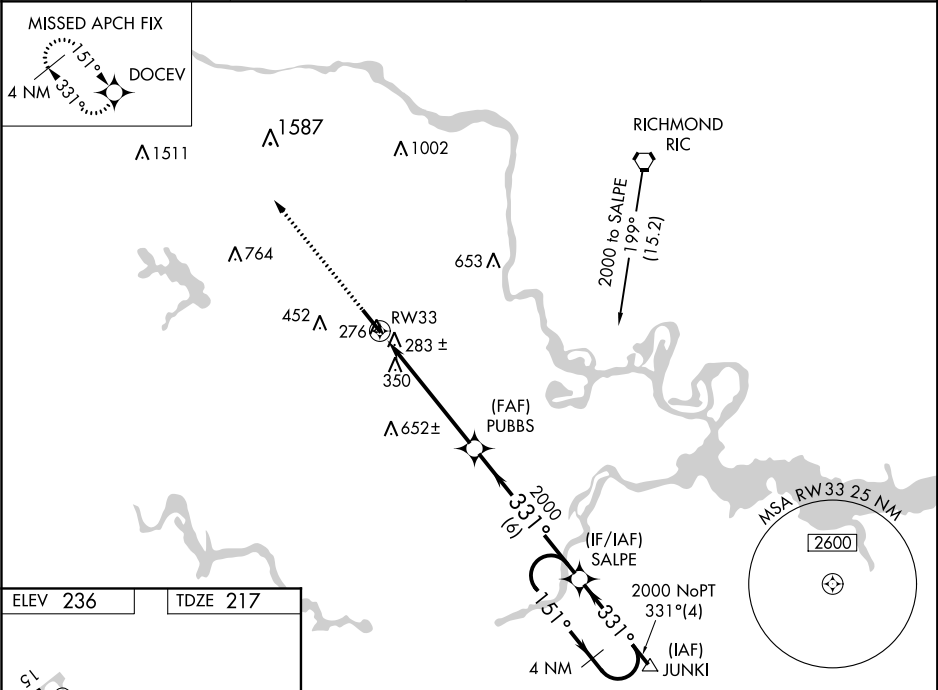
For uncompensated Baro-VNAV systems, LNAV/VNAV NA below -15°C (5°F) or above 54°C (130°F). When local altimeter setting not received, use Richmond Intl altimeter setting and increase all DA 36 feet and all MDA 40 feet; increase LPV and LNAV/VNAV all Cats and LNAV Cats C/D and Circling Cat C visibility ½ mile. DME/DME RNP-0.3 NA. For inop MALSR, increase LPV all Cats visibility to 1 mile and LNAV Cat C/D to 1 ½ mile. For inop MALSR when using Richmond Intl altimeter setting, increase LPV all Cats visibility to 1 ½ mile. Baro-VNAV and VDP NA when using Richmond Intl altimeter setting.

MALSR

MISSED APPROACH:

Climb to 3000 direct DOCEV and hold.

AWOS-3PT <b>128.625</b>	POTOMAC APP CON <b>126.75 307.2</b>	CLNC DEL <b>124.6</b>	UNICOM <b>123.05 (CTAF) 0</b>
----------------------------	--	--------------------------	----------------------------------



ELEV 236

TDZE 217

3000

DOCEV

\*LNAV only

PUBBS 2000

SALPE

4 NM Holding Pattern

\*1.5 NM to RWY 33

RWY 33

1.5

3.9 NM

6 NM

331°

151°

2000

GP 3.00°

TCH 49

CATEGORY	A	B	C	D
LPV DA	510-½ 293 (300-½)			
LNAV/VNAV DA	598-⅞ 381 (400-⅞)			
LNAV MDA	720-½ 503 (500-½)		720-1 503 (500-1)	
CIRCLING	720-1 484 (500-1)		760-1½ 800-2 524 (600-1½) 564 (600-2)	