

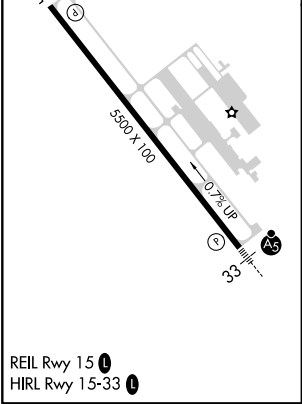
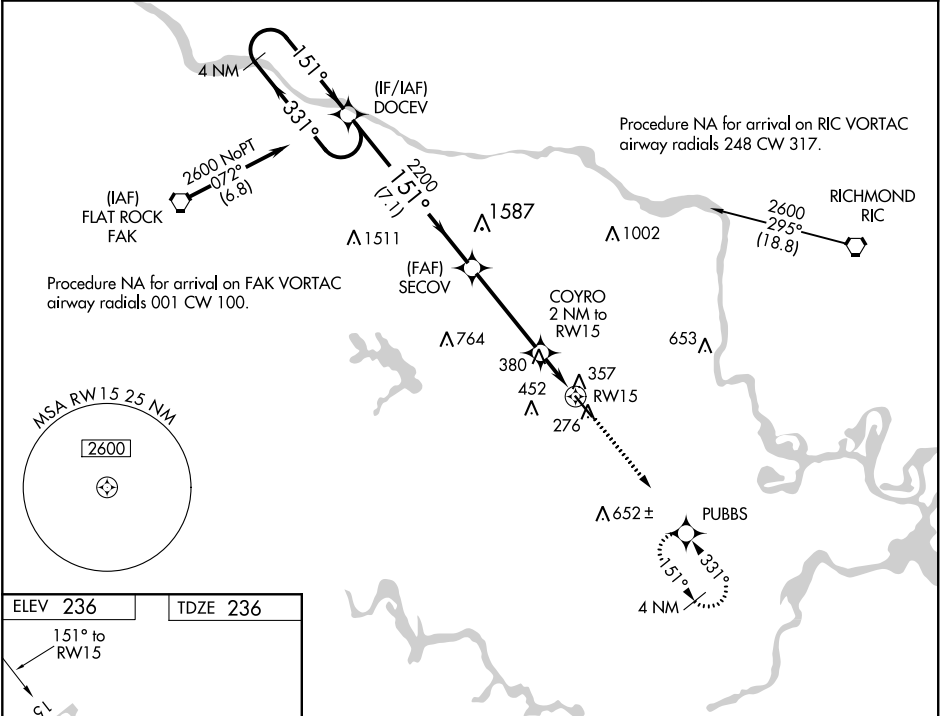
WAAS CH 63216 W15A	APP CRS 151°	Rwy Idg TDZE 236 Apt Elev 236
--	------------------------	---



RNAV (GPS) RWY 15

RICHMOND EXECUTIVE-CHESTERFIELD COUNTY (F'CI)

RNP APCH.	For uncompensated Baro-VNAV systems, LNAV/VNAV NA below -15°C or above 54°C. When local altimeter setting not received, use Richmond Intl altimeter setting and increase all DA 36 feet, and all MDA 40 feet, increase LNAV/VNAV all Cats visibility ¼ mile. VDP and Baro-VNAV NA when using Richmond Intl altimeter setting.	MISSED APPROACH: Climb to 2000 direct PUBBS and hold.
-----------	---	---

AWOS-3PT 128.625	POTOMAC APP CON 126.75 307.2	CLNC DEL 124.6	UNICOM 123.05 (CTAF) 
----------------------------	--	--------------------------	--



4 NM Holding Pattern				2000	PUBBS
DOCEV					
SECOV				*LNAV only.	
COYRO 2 NM to RW15				*1.3 NM to RW15	
GP 3.00° TCH 43				RW15	
7.1 NM				3.9 NM	0.7 NM
CATEGORY	A	B	C	D	
LPV DA	486-1 250 (300-1)				
LNAV/VNAV DA	692-1½ 456 (500-1½)				
LNAV MDA	680-1 444 (500-1)		680-1¾ 444 (500-1¾)		680-1½ 444 (500-1½)

NE-3, 03 DEC 2020 to 31 DEC 2020

NE-3, 03 DEC 2020 to 31 DEC 2020