

WAAS CH 58236 W10A	APP CRS 102°	Rwy Idg 5350 TDZE 28 Apt Elev 28
--	------------------------	---

RNAV (GPS) RWY 10

HAMPTON ROADS EXECUTIVE (PVG)

RNP APCH.

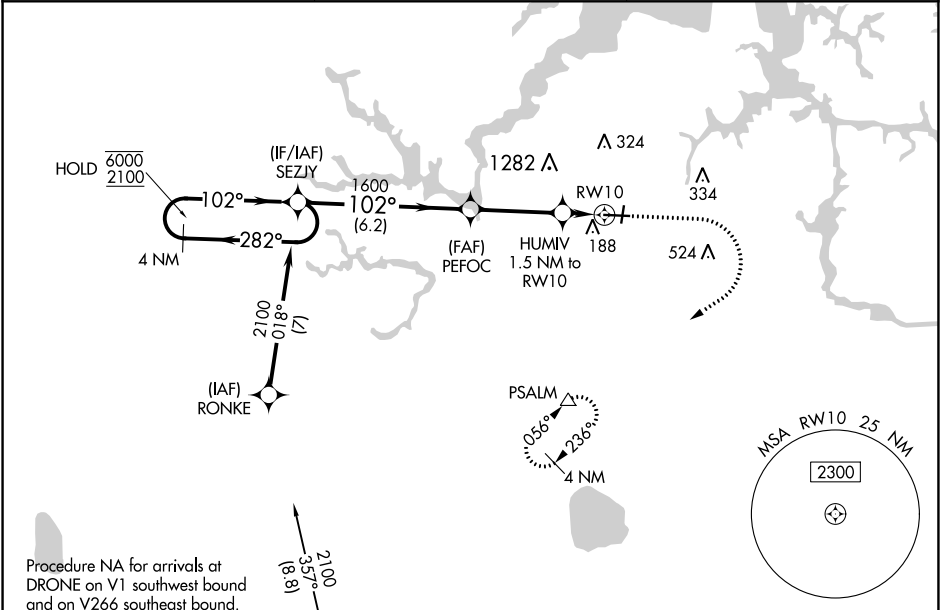
▼

▲

Circling NA to Rwys 2 and 20. Circling Cat C NA north of Rwy 10-28.
Rwy 10 helicopter visibility reduction below ¾ SM NA. For uncompensated
Baro-VNAV systems, LNAV/VNAV NA below -15°C or above 54°C.

MISSED APPROACH: Climb to 1600 then climbing right turn to 2500 direct PSALM and hold.

AWOS-3PT 118.375	NORFOLK APP CON 118.9 353.7	UNICOM 122.725 (CTAF) 0
----------------------------	---------------------------------------	-----------------------------------



ELEV 28

TDZE 28

4 NM Holding Pattern		SEZJY	PEFOC	HUMIV 1.5 NM to RW10	PSALM
6000 2100		282° 102°	1600	1600	2500
GP 3.00° TCH 45		102°	1600	*540	*LNAV only.
		6.2 NM	3.3 NM	1.5 NM	
CATEGORY	A	B	C	D	
LPV DA	228-¾	200 (200-¾)		NA	
LNAV/VNAV DA	338-7/8	310 (400-7/8)		NA	
LNAV MDA	420-1	392 (400-1)	420-1 1/8 392 (400-1 1/8)	NA	
CIRCLING	500-1	472 (500-1)	780-2 1/4 752 (800-2 1/4)	NA	

HIRL Rwy 10-28 0

REIL Rwys 10 and 28 0

MIRL Rwy 2-20 0