



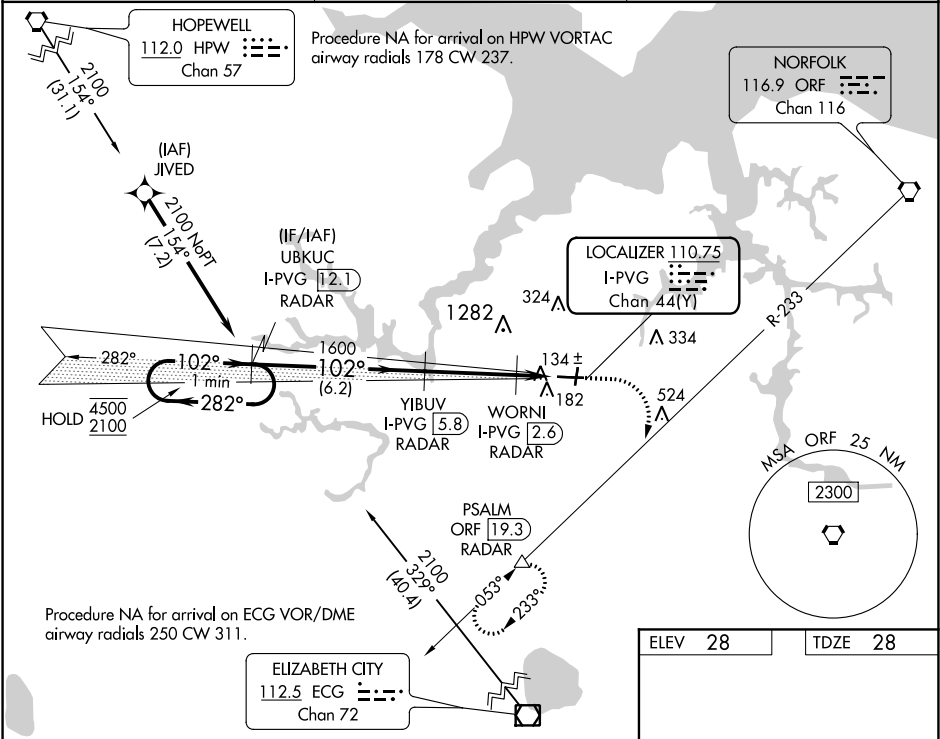
LOC/DME I-PVG	APP CRS	Rwy Idg	5350
110.75	102°	TDZE	28
Chan 44(Y)		Apt Elev	28



ILS or LOC RWY 10

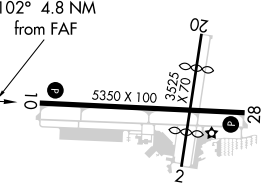



HAMPTON ROADS EXECUTIVE (PVG)

RNAV 1-GPS or RADAR required for procedure entry. DME or RADAR required.		MISSED APPROACH: Climb to 1600 then climbing right turn to 2500 on ORF VORTAC R-233 to PSALM/ORF 19.3 DME/RADAR and hold.
 NA	Circling NA to Rwy's 2 and 20. Circling NA for Cat C north of Rwy's 10-28.	

AWOS-3PT 118.375	NORFOLK APP CON 118.9 353.7	UNICOM 122.725 (CTAF) 
---------------------	--------------------------------	--



One Minute Holding Pattern	UBKUC I-PVG [12.1] RADAR		YIBUV I-PVG [5.8] RADAR		1600	2500	ORF R-233	PSALM 
	4500 ← 282°		2100 → 102°		102°	1600		
	GS 3.00°		TCH 45					
CATEGORY	A	B	C	D				
S-ILS 10	228-¾		200 (200-¾)		NA			
S-LOC 10	400-1		372 (400-1)		NA			
 CIRCLING	500-1		472 (500-1)		780-2¼		752 (800-2¼)	

ELEV 28	TDZE 28
	
HIRL Rwy 10-28 	
REIL Rwy's 10 and 28 	
MIRL Rwy's 2-20 	
FAF to MAP 4.8 NM	
Knots	60 90 120 150 180
Min:Sec	4:48 3:12 2:24 1:55 1:36