

WAAS CH 77827 W24A	APP CRS 241°	Rwy Idg TDZE Apt Elev	4471 2087 2087
--	------------------------	-----------------------------	---

RNAV (GPS) RWY 24

VIRGINIA HIGHLANDS (VJI)

▼

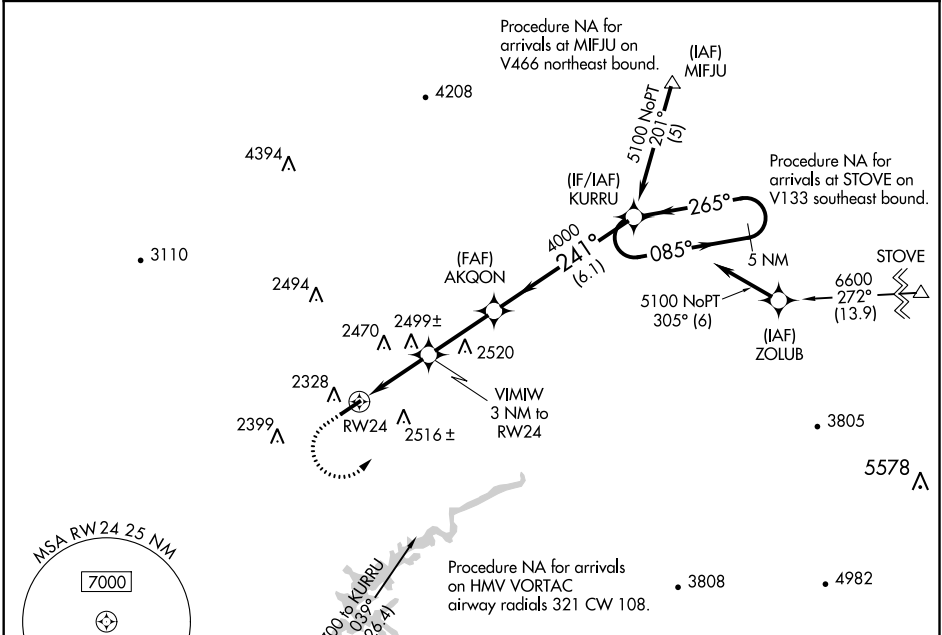
▲

For uncompensated Baro-VNAV systems, LNAV/VNAV NA below -19°C (-2°F) or above 53°C (127°F). DME/DME RNP-0.3 NA. Inop table does not apply to LPV.

ODALS

MISSED APPROACH: Climb to 2900 then climbing left turn to 5100 direct KURRU and hold.

AWOS-3 128.125	TRI-CITY APP CON ★ 125.25 349.0	UNICOM 122.8 (CTAF) 0
--------------------------	---	---------------------------------



2900

5100

KURRU

VGSI and RNAV glidepath not coincident (VGSI Angle 4.00/TCH 32).

5 NM Holding Pattern

* LNAV only.

1.2 NM to RW24

3 NM to RW24

AKQON

4000

241°

085°

265°

5100

3100*

4000

GP 3.00° TCH 58

1.2

1.8

2.8

6.1

CATEGORY	A	B	C	D
LPV DA		2337-1	250 (300-1)	
LNAV/VNAV DA		2525-1¼	438 (500-1¼)	
LNAV MDA	2760-1	673 (700-1)	2760-1¾	673 (700-1¾)
CIRCLING	2860-1	773 (800-1)	2860-2¼ 773 (800-2¼)	3080-3 993 (1000-3)

ELEV 2087

TDZE 2087

241° to RW24

4471 X 75

0.6% UP

MIRL Rwy 6-24 0

REIL Rwy 24 0