

WAAS CH 86706 W23A	APP CRS 231°	Rwy Idg TDZE 191 Apt Elev 193	5002
--	------------------------	---	-------------

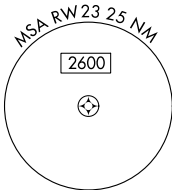
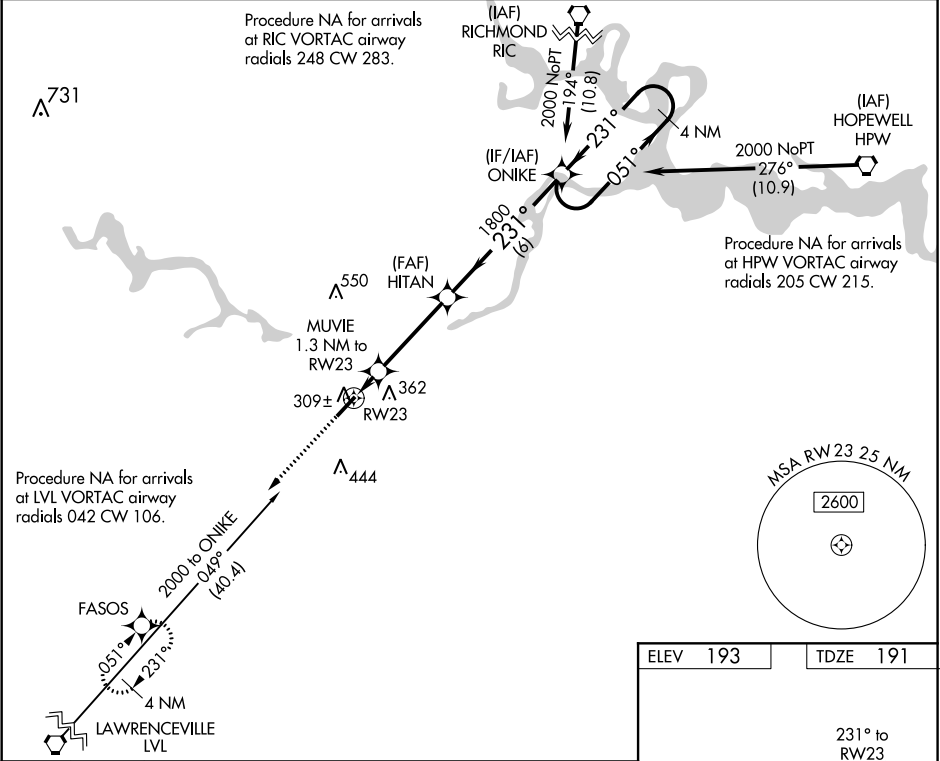
RNAV (GPS) RWY 23

DINWIDDIE COUNTY (P'TB)

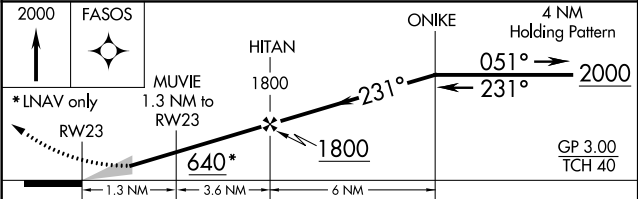
Baro-VNAV NA when using Richmond Executive-Chesterfield County altimeter setting. For uncompensated Baro-VNAV systems, LNAV/VNAV NA below -15°C (5°F) or above 54°C (130°F). DME/DME RNP-0.3 NA. When local altimeter setting not received, use Richmond Executive-Chesterfield County altimeter setting: increase LPV DA to 478 feet and LNAV/VNAV DA to 517 feet and all MDA 40 feet; increase LNAV/VNAV all Cats visibility and LNAV Cat C visibility 1/8 mile, and increase Circling Cat C visibility 1/4 mile.

MISSED APPROACH:
Climb to 2000 direct FASOS and hold.

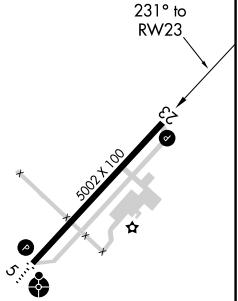
AWOS-3 133.325	POTOMAC APP CON 126.75 307.2	GCO 135.075	UNICOM 122.7 (CTAF) 0
--------------------------	--	-----------------------	---------------------------------



ELEV 193	TDZE 191
----------	----------



CATEGORY	A	B	C	D
LPV DA	441-1	250 (300-1)		NA
LNAV/VNAV DA	480-1	289 (300-1)		NA
LNAV MDA	560-1	369 (400-1)		NA
CIRCLING	680-1	487 (500-1)	760-1 1/2 567 (600-1 1/2)	NA



MIRL Rwy 5-23 0
REIL Rwy 5 and 23 0