

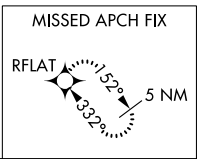
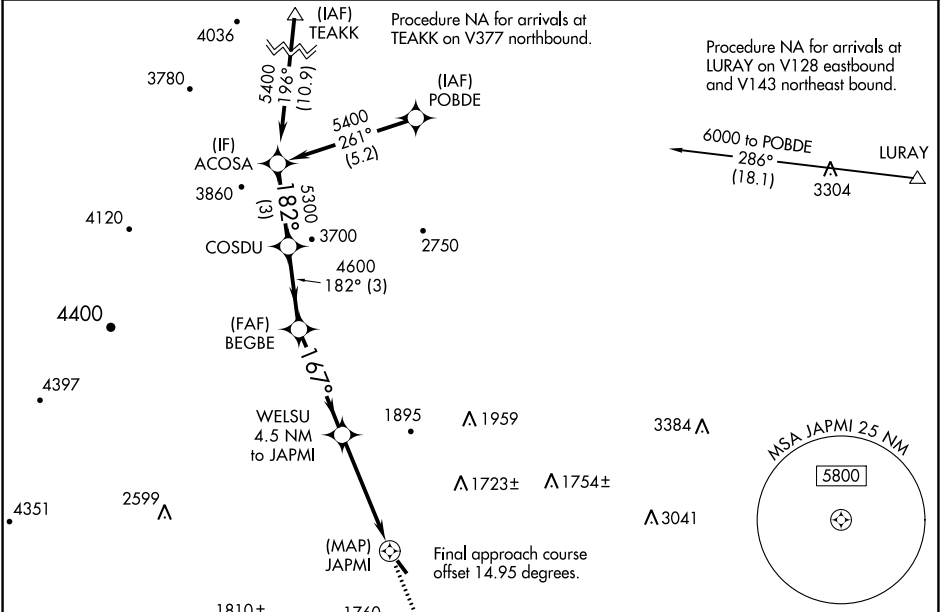
APP CRS	Rwy Idg	2745
167°	TDZE	1165
	Apt Elev	1165

RNAV (GPS) RWY 15

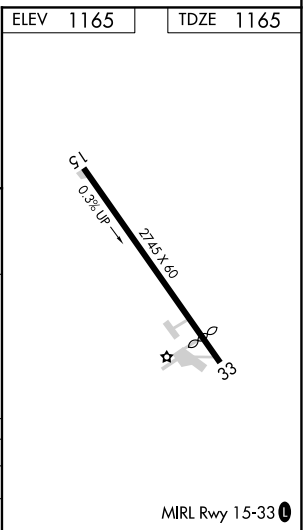
BRIDGEWATER AIR PARK (VBW)

<p>NA</p> <p>-20°C</p>	<p>DME/DME RNP-0.3 NA. Helicopter visibility reduction below ¾ SM NA. When local altimeter setting not received, use Staunton/Waynesboro/Harrisonburg altimeter setting and increase all MDA 40 feet and visibility Cat B ¼ mile.</p>	<p>MISSED APPROACH: Climb to 5000 direct SONRY and on track 136° to RFLAT and hold, continue climb-in-hold to 5000.</p>
--------------------------------------	---	---

AWOS-3 119.55	POTOMAC APP CON 132.85 323.125	UNICOM 122.7 (CTAF) 0
------------------	-----------------------------------	---------------------------------



Visual Segment - Obstacles.				
ACOSA	COSDU	BEGBE	WELSU 4.5 NM to JAPMI	JAPMI
5400	5300	4600	3120	
3 NM 3 NM 4.1 NM 4.5 NM 0.5 NM				
CATEGORY	A	B	C	D
LNVA MDA	2080-1¼	915 (1000-1¼)	NA	
CIRCLING	2080-1¼	915 (1000-1¼)	NA	



NE-3, 03 DEC 2020 to 31 DEC 2020

NE-3, 03 DEC 2020 to 31 DEC 2020