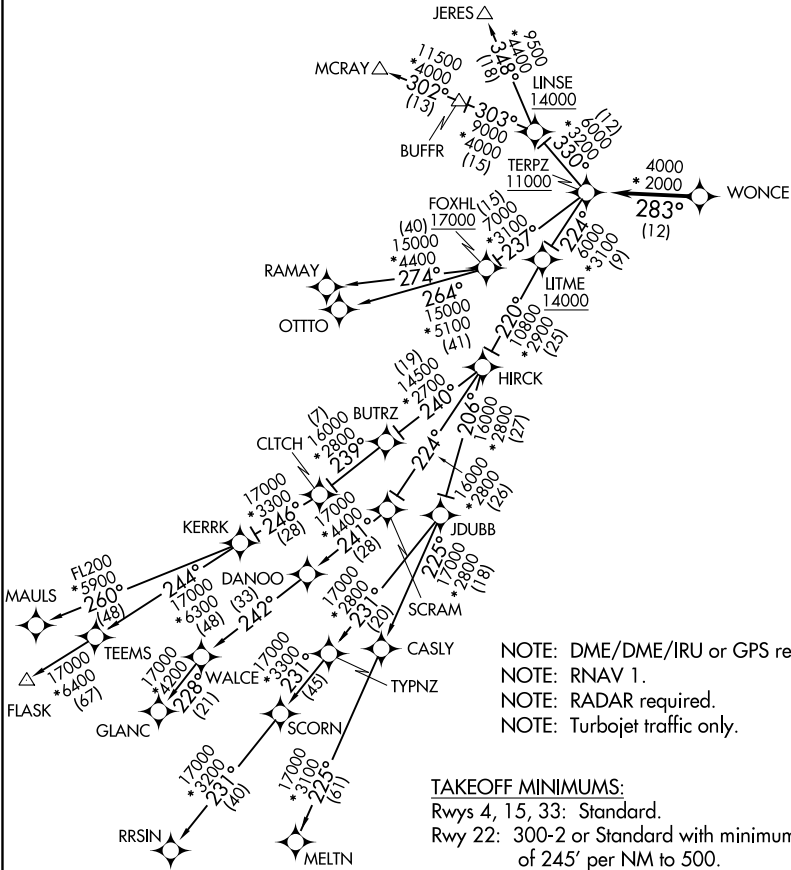


ATIS
124.475
CLNC DEL
119.075
GND CON
119.075
EASTON TOWER ★
118.525 (CTAF)
POTOMAC DEP CON
133.75 254.35

TOP ALTITUDE:
RAMAY, OTTTO, MAULS, FLASK,
RRSIN, GLANC, MELTN
TRANSITIONS: 17000
JERES, MCRAY TRANSITIONS:
16000



NOTE: DME/DME/IRU or GPS required.
NOTE: RNAV 1.
NOTE: RADAR required.
NOTE: Turbojet traffic only.

TAKEOFF MINIMUMS:
Rwys 4, 15, 33: Standard.
Rwy 22: 300-2 or Standard with minimum climb
of 245' per NM to 500.

NOTE: Chart not to scale.