

WAAS CH 40207 W22A	APP CRS 221°	Rwy Idg 5175 TDZE 72 Apt Elev 72
--	------------------------	---

RNAV (GPS) RWY 22

EASTON/NEWMAM FIELD (E/SN)

RNP APCH.

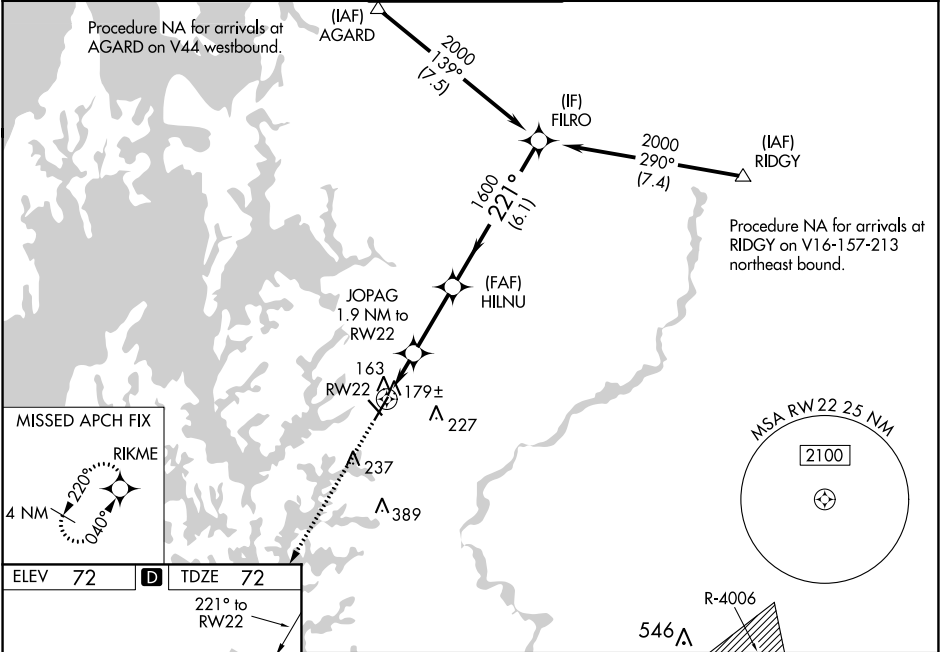
▼

▲

Baro-VNAV NA when using Baltimore altimeter setting. For uncompensated Baro-VNAV systems, LNAV/VNAV NA below -15°C or above 43°C. Rwy 22 helicopter visibility reduction below ¾ SM NA. When local altimeter setting not received, use Baltimore altimeter setting and increase all DA 93 feet and all MDA 100 feet; increase LPV all Cats visibility ½ SM, increase LNAV/VNAV all Cats visibility ¼ SM, and increase LNAV Cats C and D ¼ SM.

MISSED APPROACH: Climb to 2000 direct RIKME and hold.

ATIS 124.475	POTOMAC APP CON 133.75 254.35	EASTON TOWER ★ 118.525 (CTAF) 0	GND CON 119.075	CLNC DEL 119.075
------------------------	---	---	---------------------------	----------------------------



ELEV 72	D	TDZE 72
<div>221° to RW22</div> <div><div>2000</div><div>RIKME</div></div> <div><div>*LNAV only</div><div><div>JOPAG 1.9 NM to RW22</div><div>HILNU 1600</div><div>FILRO 2000</div></div><div><div>RW22</div><div>700*</div><div>1600</div></div><div><div>1.9 NM</div><div>2.8 NM</div><div>6.1 NM</div></div><div>GP 3.00° TCH 45</div></div>		
CATEGORY	A	B C D
LPV DA		322-1 250 (300-1)
LNAV/VNAV DA		362-1 290 (300-1)
LNAV MDA		440-1 368 (400-1)