

WAAS CH <b>65607</b> <b>W16A</b>	APP CRS <b>159°</b>	Rwy Idg TDZE <b>789</b> Apt Elev <b>789</b>	<b>5100</b>
--	------------------------	---	-------------

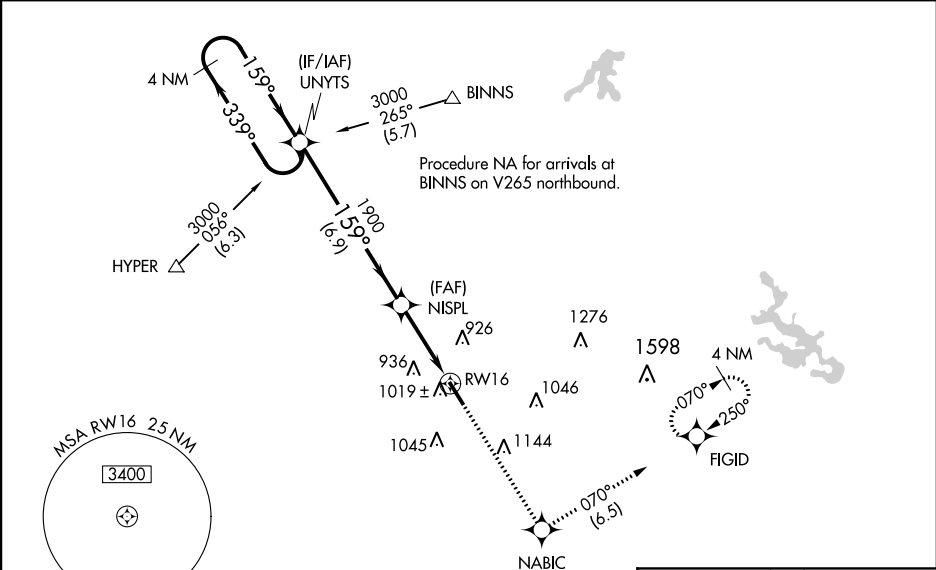
RNAV (GPS) RWY 16

CARROLL COUNTY RGNL/JACK B POAGE FIELD (DMW)

Baro-VNAV NA when using Frederick altimeter setting. For uncompensated Baro-VNAV systems, LNAV/VNAV NA below -1.6°C (4°F) or above 54°C (130°F). When local altimeter setting not received, use Frederick altimeter setting and increase all DA 116 feet and all MDA 120 feet; increase LPV all Cats and LNAV Cat C visibility 3⁄8 mile, and LNAV/VNAV all Cats visibility to 1 3⁄4 mile and Circling Cat C visibility 1⁄4 mile. When VGSI inop, Straight-in/Circling Rwy 16 procedure NA at night. DME/DME RNP-0.3 NA. Visibility reduction by helicopters NA.

MISSED APPROACH: Climb to 2200 direct NABIC then climbing left turn to 3000 on track 070° to FIGID and hold.

AWOS-3 <b>121.25</b>	POTOMAC APP CON <b>125.525 291.625</b>	GCO <b>121.725</b>	UNICOM <b>122.7 (CTAF) 0</b>
-------------------------	---	-----------------------	---------------------------------



4 NM Holding Pattern

UNYTS

3000 ← 339°

159° →

GP 3.00°

TCH 45

1900

1900

6.9 NM

3.4 NM

RWY 16

2200

NABIC

3000

FIGID

↑

✱

↶

↷

fr 070°

CATEGORY	A	B	C	D
LPV DA	1081-1	292 (300-1)		NA
LNAV/ VNAV DA	1189-1 3⁄8	400 (400-1 3⁄8)		NA
LNAV MDA	1280-1	491 (500-1)	1280-1 3⁄8 491 (500-1 3⁄8)	NA
CIRCLING	1320-1	531 (600-1)	1320-1 1⁄2 531 (600-1 1⁄2)	NA

ELEV 789

TDZE 789

159° to RWY 16

5100 x 100

0.3% UP

REIL Rwy 16 and 34 0

MIRL Rwy 16-34 0