

FORT BELVOIR, VIRGINIA

RNAV (GPS) RWY 32

WAAS CH 91281 W32A	APCH CRS 323°	Rwy ldg TDZE 68 Arpt Elev 74
--------------------------	------------------	------------------------------------

AL-5504 (USA)

DAVISON AAF (KDAV)

<p>▼ * When ALS inop, increase RVR to 45, vis to 7/8 mile. ** When ALS inop, increase RVR to 60, vis to 1 1/8 miles. *** When ALS inop, increase vis to 1 3/8 miles.</p>	<p>MAIS (A4)</p>	<p>MISSED APPROACH: Climb to 600 then climbing left turn to 2000 direct UDCY and hold.</p>
--	----------------------	--

ATIS 128.175	POTOMAC APP CON 118.95 319.1	TOWER * 126.3 (CTAF) 0 229.4	GND CON 121.9 351.8	CLNC DEL 351.8	PAR
-----------------	---------------------------------	---------------------------------	------------------------	-------------------	-----

\*\*\*\* When ALS inop, increase CAT  
AB RVR to 55, vis to 1 mile;  
483 • CAT CD vis to 1 3/8 miles.

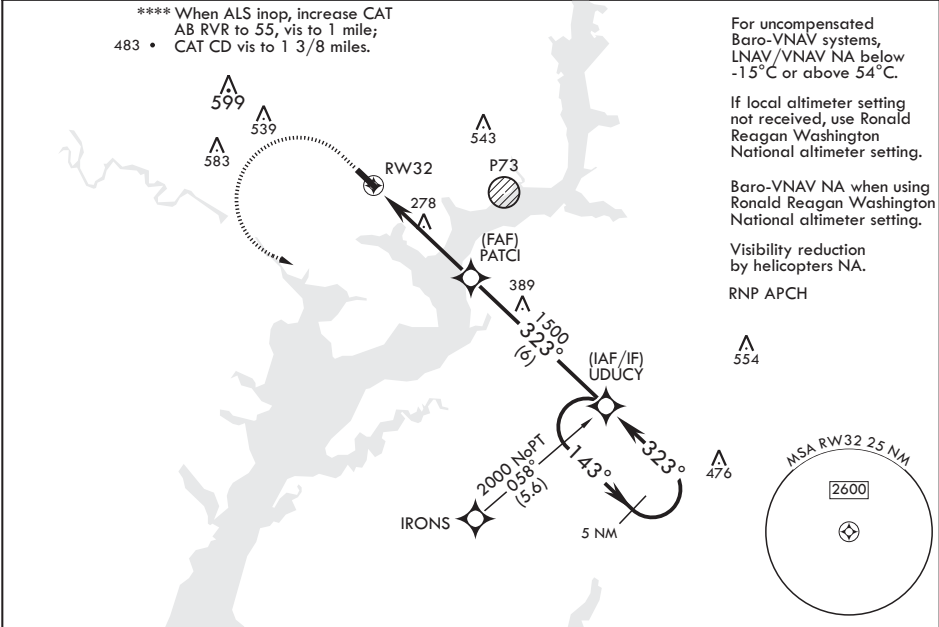
For uncompensated  
Baro-VNAV systems,  
LNAV/VNAV NA below  
-15°C or above 54°C.

If local altimeter setting  
not received, use Ronald  
Reagan Washington  
National altimeter setting.

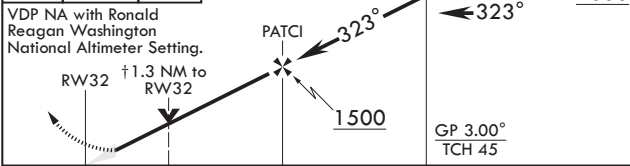
Baro-VNAV NA when using  
Ronald Reagan Washington  
National altimeter setting.

Visibility reduction  
by helicopters NA.

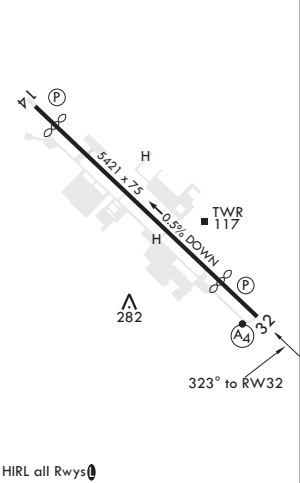
RNP APCH



600	2000	UDCY	† LNAV only	UDCY	ELEV 74	TDZE 68
-----	------	------	-------------	------	---------	---------



CATEGORY	A	B	C	D
LPV DA *	351/40	283	(300-3/4)	
LNAV/VNAV DA **	481/50	413	(500-1)	
LNAV MDA ****	540/40 472 (500-3/4)	540/60 472 (500-1 1/2)		
CIRCLING	700-1 626 (700-1)	740-1 666 (700-1)	800-2 726 (800-2)	1000-3 926 (1000-3)
RONALD REAGAN WASHINGTON NATIONAL ALTIMETER MINIMUMS				
LPV DA *	384/40	316	(400-3/4)	
LNAV/VNAV DA ***	514/55	446	(500-1)	
LNAV MDA ****	580/40 512 (600-3/4)	580-1 1/4 512 (600-1 1/4)		
CIRCLING	720-1 646 (700-1)	780-1 706 (800-1)	820-2 1/4 746 (800-2 1/4)	1040-3 966 (1000-3)



FORT BELVOIR, VIRGINIA

38°43'N - 77°11'W

DAVISON AAF (KDAV)

Amdt 2 10SEP20

RNAV (GPS) RWY 32