

RNAV (GPS) RWY 5

SHENANDOAH VALLEY RGNL (SHD)

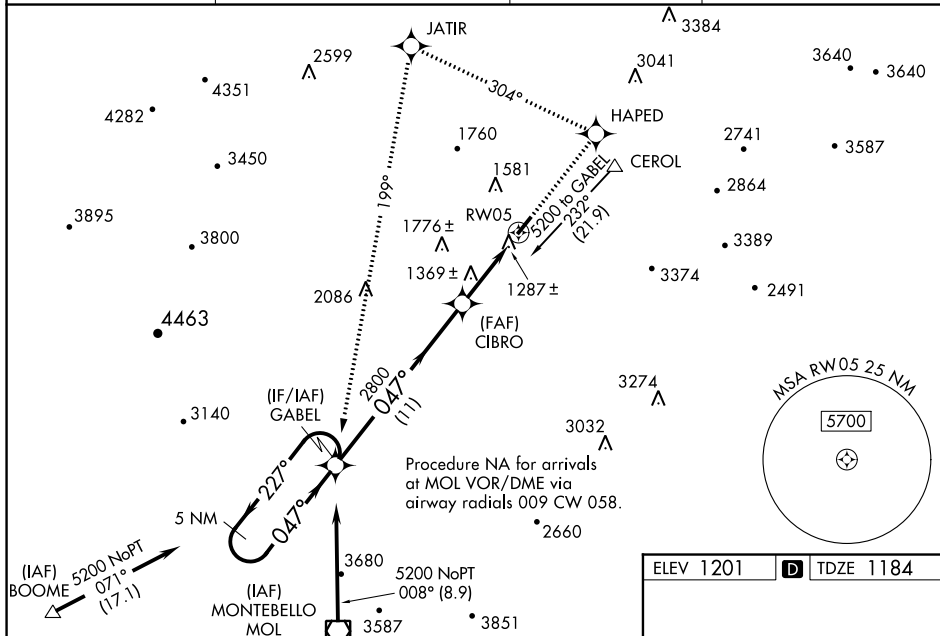
WAAS CH 81913 W05A	APP CRS 047°	Rwy Idg TDZE Apt Elev	6002 1184 1201
--	------------------------	-----------------------------	---

V For inoperative MALSR when using Charlottesville altimeter setting, increase
A LPV visibility to 1 1/4 mile. For uncompensated Baro-VNAV systems, LNAV/VNAV NA below -17°C (2°F) or above 46°C (114°F). DME/DME RNP-0.3 NA. Baro-VNAV and VDP NA when using Charlottesville altimeter setting. When local altimeter setting not received, use Charlottesville altimeter setting and increase all DA 130 feet, all MDA 140 feet. Increase LPV all Cats visibility 1/4 mile, LNAV/VNAV all Cats 1/2 mile, LNAV Cat C/D 1/4 mile and Circling Cat D 1/2 mile.



MISSED APPROACH: Climb to 5200 direct HAPED and left turn via track 304° to JATIR and left turn via track 199° to GABEL and hold.

AWOS-3 124.925	POTOMAC APP CON 132.85 323.125	CLNC DEL 118.35	UNICOM 123.0 (CTAF) 0
--------------------------	--	---------------------------	---------------------------------



NE-3, 03 DEC 2020 to 31 DEC 2020

5 NM Holding Pattern

* RNAV only.

GABEL

5200

← 227°

047° →

GP 3.00°

TCH 56

047°

2800

CIBRO

VGSI and RNAV glidepath not coincident.

* 1.2 NM to RW05

RW05

11 NM

3.7 NM

1.2

CATEGORY	A	B	C	D
LPV DA		1384-½	200 (200-½)	
RNAV/VNAV DA		1563-¾	379 (400-¾)	
RNAV MDA	1620-½	436 (500-½)	1620-¾ 436 (500-¾)	1620-1 436 (500-1)
CIRCLING	1620-1 419 (500-1)	1660-1 459 (500-1)	1660-1½ 459 (500-1½)	1820-2 619 (700-2)

