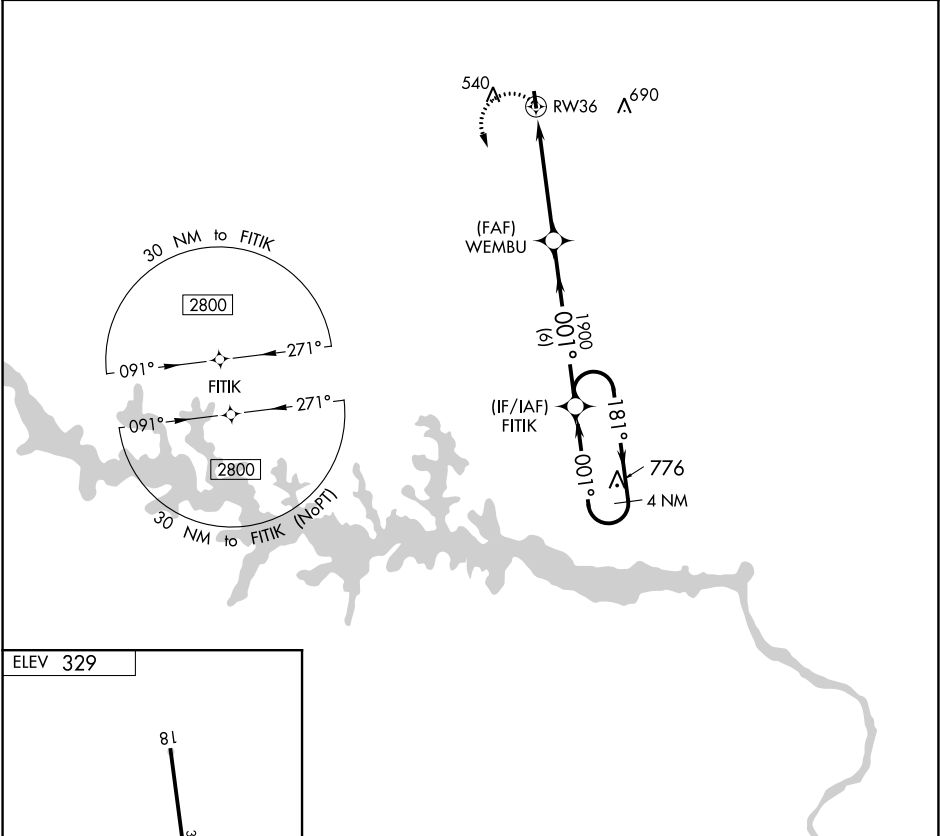


APP CRS 001°	Rwy Idg	N/A	RNAV (GPS)-B
	TDZE	N/A	
Apt Elev		329	BRUNSWICK COUNTY AIRPORT (LVL)
RNP APCH.			
Procedure NA at night. Helicopter visibility reduction below 1 SM NA. When local altimeter setting not received, use South Hill altimeter setting and increase all MDA 60 feet.			MISSED APPROACH: Climbing left turn to 3000 direct FITIK and hold.
AWOS-3 119.625		WASHINGTON APP CON 118.75 377.1	UNICOM 122.8 (CTAF) 0



ELEV 329		3000 FITIK Visual Segment - Obstacles.		4 NM Holding Pattern	
81		WEMBU		181° → 2800	
3000 X 50		RW36		← 001	
0.65% Up		1900			
36		4.9 NM		6 NM	
001° to RW36		CATEGORY		C	
		A		D	
MIRL Rwy 18-36 0		CIRCLING		NA	
		1340-3		1011 (1100-3)	