

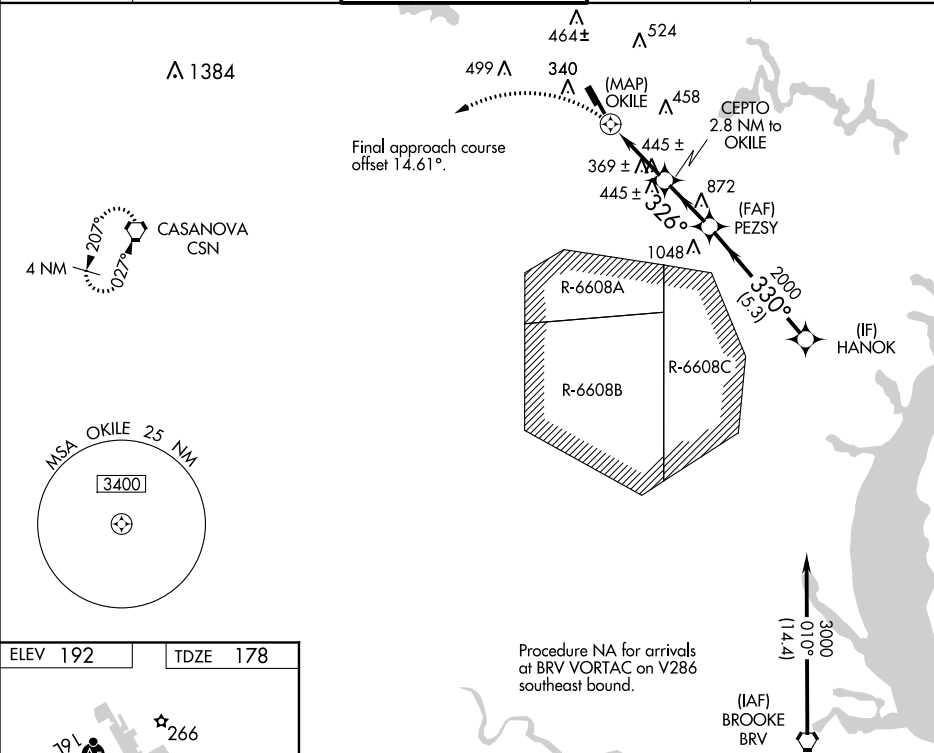
WAAS CH 63130 W34A	APP CRS 326°	Rwy Idg TDZE 178 Apt Elev 192
--	------------------------	---

RNAV (GPS) RWY 34R

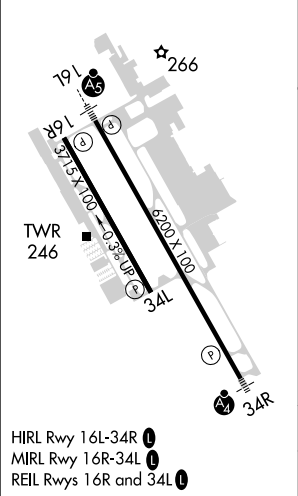
MANASSAS RGNL/HARRY P DAVIS FIELD (HEF)


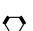




RNP APCH. ▼ Rwy 34R helicopter visibility reduction below ¾ SM NA. For inop ALS, increase LP and LNAV Cats C/D visibility to 1 ½ SM. ▲	MALSF ▲	MISSED APPROACH: Climbing left turn to 3000 direct CSN VORTAC and hold.
--	------------	---

ATIS 125.175	POTOMAC APP CON 128.525 306.925	MANASSAS TOWER ★ 133.1 (CTAF) 360.75	GND CON 121.8	CLNC DEL 120.2
------------------------	---	--	-------------------------	--------------------------



ELEV 192	TDZE 178
-----------------	-----------------



<div>3000</div> <div></div>		<div>CSN</div> <div></div>		<div>HANOK</div>							
<div>OKILE</div> <div></div>		<div>1 NM to OKILE</div> <div></div>		<div>CEPTO 2.8 NM to OKILE</div>		<div>PEZSY</div>		<div>330°</div>		<div>3000</div>	
		<div>1260</div>		<div>326°</div>		<div></div>		<div>2000</div>		<div>$\leq 3.00'$ TCH 40</div>	
<div>0.5</div>		<div>1 NM</div>		<div>1.8 NM</div>		<div>2.3 NM</div>		<div>5.3 NM</div>			
CATEGORY		A		B		C		D			
LP MDA				620-1		442 (500-1)					
LNAV MDA		640-1		462 (500-1)		640-1 $\frac{1}{8}$		462 (500-1 $\frac{1}{2}$)			
 CIRCLING		700-1 508 (600-1)		740-1 548 (600-1)		840-1 $\frac{3}{4}$ 648 (700-1 $\frac{3}{4}$)		920-2 $\frac{1}{4}$ 728 (800-2 $\frac{1}{4}$)			

NE-3, 03 DEC 2020 to 31 DEC 2020

NE-3, 03 DEC 2020 to 31 DEC 2020