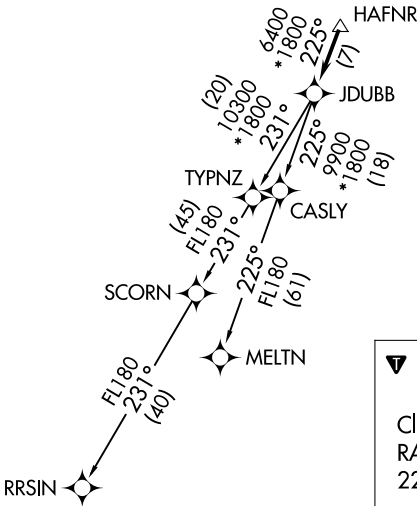
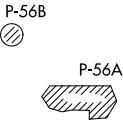


AWOS-3
125.225
CLNC DEL
118.55
UNICOM (CTAF)
122.975
POTOMAC DEP CON
125.05 350.2

TOP ALTITUDE:
3000

TAKEOFF MINIMUMS:
Rwys 17, 35: Standard

- NOTE: RNAV 1.
NOTE: RADAR required.
NOTE: DME/DME/IRU or GPS required.
NOTE: Takeoff Rwy 35 requires a climb to 1200 on heading 353° before proceeding on the ATC assigned heading for obstacle avoidance.



NOTE: Chart not to scale.

DEPARTURE ROUTE DESCRIPTION

Climb on heading assigned by ATC, expect RADAR vectors to HAFNR, then on track 225° to JDUBB, thence. . . .
. . . . on assigned transition, maintain 3000, expect clearance to filed altitude within ten (10) minutes after departure.

MELTN TRANSITION (JDUBB3.MELTN)
RRSIN TRANSITION (JDUBB3.RRSIN)