

APP CRS
032°

Rwy Idg
TDZE
Apt Elev
3204
11
11

RNAV (GPS) RWY 2

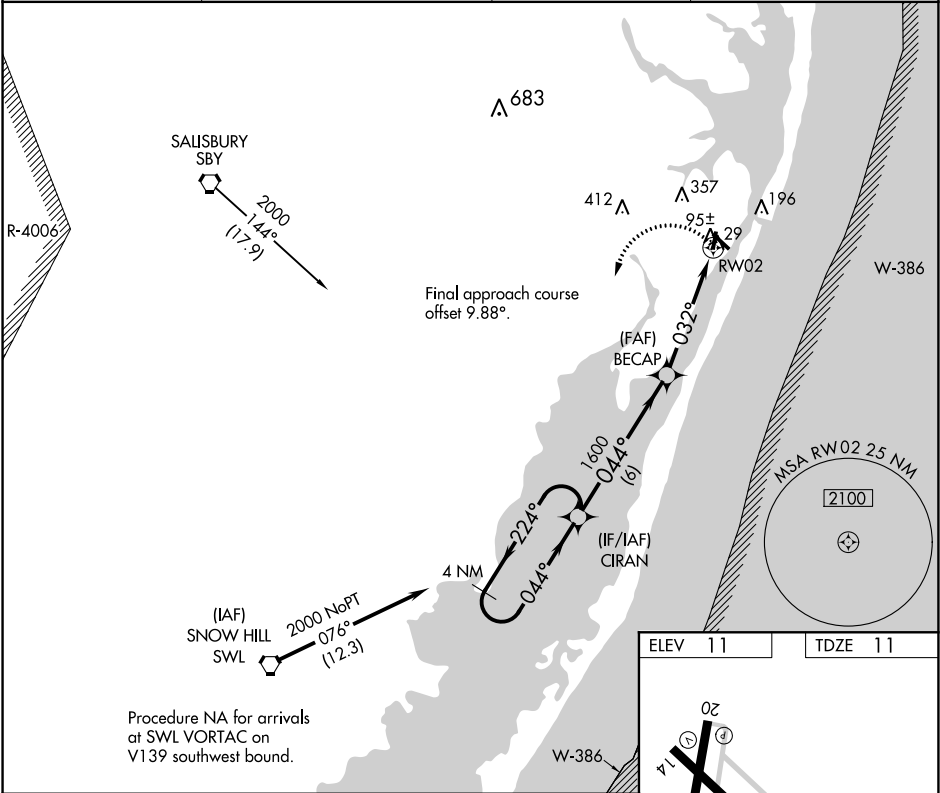
OCEAN CITY MUNI (OXB)

RNP APCH.

When local altimeter setting not received, use Salisbury altimeter setting and increase all MDAs 60 feet and visibility LNAV Cat C 1/8 SM and Circling Cat C 1/4 SM. Straight-in Rwy 2 NA at night, Circling Rwy 2, 14, 20 NA at night. Rwy 2 helicopter visibility reduction below 1 SM NA.

MISSED APPROACH:
Climbing left turn to 2000 direct CIRAN and hold.

ASOS 119.025	PATUXENT APP CON ★ 127.95 314.0	CLNC DEL 121.75	UNICOM 123.05 (CTAF) 0
------------------------	---	---------------------------	----------------------------------



4 NM Holding Pattern

CIRAN

2000

224°

044°

044°

044°

1600

3.00°

TCH 40

032°

RW02

6 NM

4.9 NM

CATEGORY	A	B	C	D
LNAV MDA	420 - 1	409 (500-1)	420 - 1 1/4 409 (500-1 1/4)	NA
CIRCLING	480 - 1	469 (500-1)	660 - 1 3/4 649 (700-1 3/4)	NA

ELEV 11

TDZE 11

032° to RW02

REIL Rwy 2 and 20 0

MRL Rwy 2-20 and 14-32 0