

AWOS-3
124.85
CLNC DEL
126.15
UNICOM
122.7 (CTAF)
POTOMAC DEP CON
120.45 306.925

TOP ALTITUDE:
3000

Climb on heading assigned by ATC, expect RADAR vectors to HAFNR, then on track 225° to JDUBB, thence. . .

. . . on assigned transition, maintain 3000, expect clearance to filed altitude within ten (10) minutes after departure.

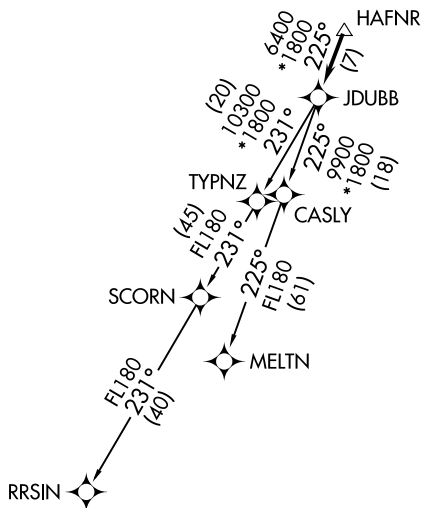
MELTN TRANSITION (JDUBB3.MELTN)

RRSIN TRANSITION (JDUBB3.RRSIN)

P-56B



P-56A



NOTE: RNAV 1.

NOTE: RADAR required.

NOTE: DME/DME/IRU or GPS required.

NOTE: Takeoff Rwy 32 requires a climb to 2500 on heading 341° before proceeding on the ATC assigned heading for obstacle avoidance.

TAKEOFF MINIMUMS

Rwy 14: Standard

Rwy 32: Standard with minimum climb
of 240' per NM to 1900.

NOTE: Chart not to scale.