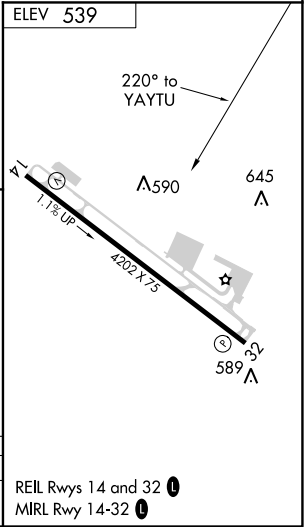
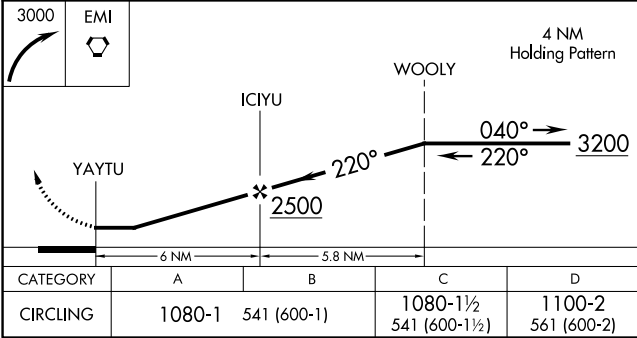
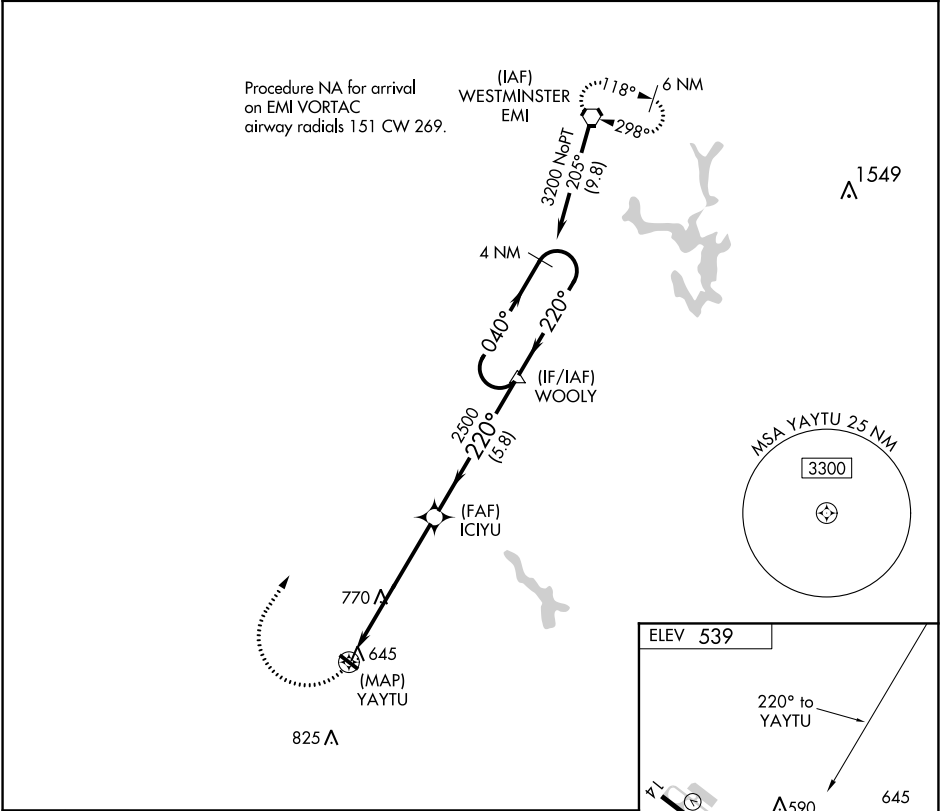


APP CRS	Rwy Idg	N/A
220°	TDZE	N/A
	Apt Elev	539

RNAV (GPS)-A  
MONTGOMERY COUNTY AIRPARK (GAI)

RNP APCH.	MISSED APPROACH: Climbing right turn to 3000 direct EMI VORTAC and hold.
<div>▼ ▲</div> When local altimeter setting is not received use Washington Dulles Intl altimeter setting and increase all MDA 80 feet and visibility Cat C ¼ SM.	

AWOS-3PT 128,275	POTOMAC APP CON 128.7 307.9	CLNC DEL 121.6	UNICOM 123.075 (CTAF) 0
---------------------	--------------------------------	-------------------	----------------------------



NE-3, 03 DEC 2020 to 31 DEC 2020

NE-3, 03 DEC 2020 to 31 DEC 2020