

FORT EUSTIS, VIRGINIA

RNAV (GPS) RWY 14

APCH CRS	Rwy Idg	3025
139°	TDZE	11
	Arpt Elev	11

AL-5211 [USA]

FELKER AAF (KFAF)

DME/DME RNP - 0.3 NA

When local altimeter setting not received, use Newport News/Williamsburg Intl altimeter setting. Visibility reduction by helicopters NA.

ODALS

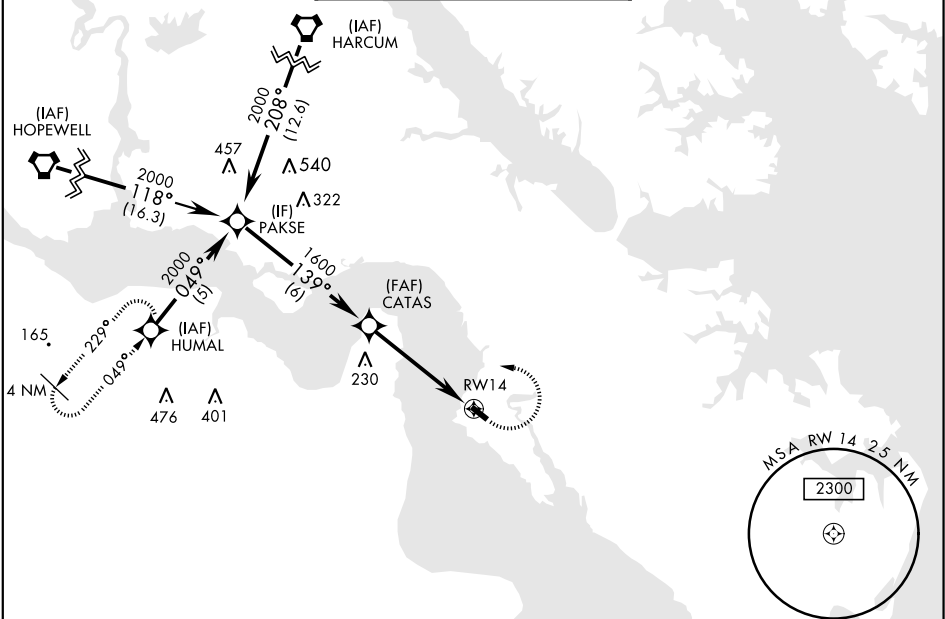


MISSED APPROACH: Climbing left turn to 2000 direct HUMAL and hold.

NORFOLK APP CON  
125.7 335.625

FELKER TOWER ★  
126.3 (CTAF) 0 269.25

GND CON  
121.35 229.4



NOT FOR CIVIL USE

# Visual Segment - Obstacles

PAKSE

2000

139°

CATAS

1600

RW14

4.8 NM

CATEGORY

A

B

C

D

LNAV MDA

420-¾

409

(500-¾)

NA

CIRCLING

440-1

429 (500-1)

480-1

469 (500-1)

NA

NEWPORT NEWS/WILLIAMSBURG INTL ALTIMETER

LNAV MDA

440-¾

429

(500-¾)

NA

CIRCLING

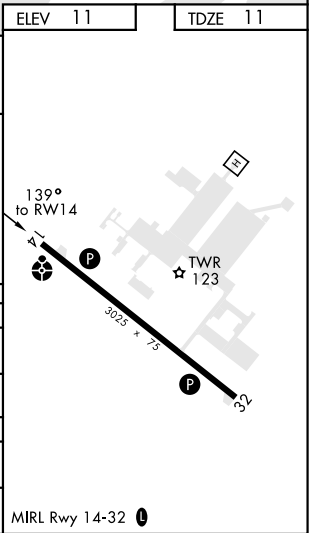
460-1

449 (500-1)

500-1

489 (500-1)

NA



FORT EUSTIS, VIRGINIA

37°08'N-76°37'W

FELKER AAF (KFAF)

Amdt 2B 20JUN19

RNAV (GPS) RWY 14

NE-3, 03 DEC 2020 to 31 DEC 2020

NE-3, 03 DEC 2020 to 31 DEC 2020