

WAAS CH 40305 W19B	APP CRS 191°	Rwy Idg 11089 TDZE 272 Apt Elev 312
--	------------------------	--

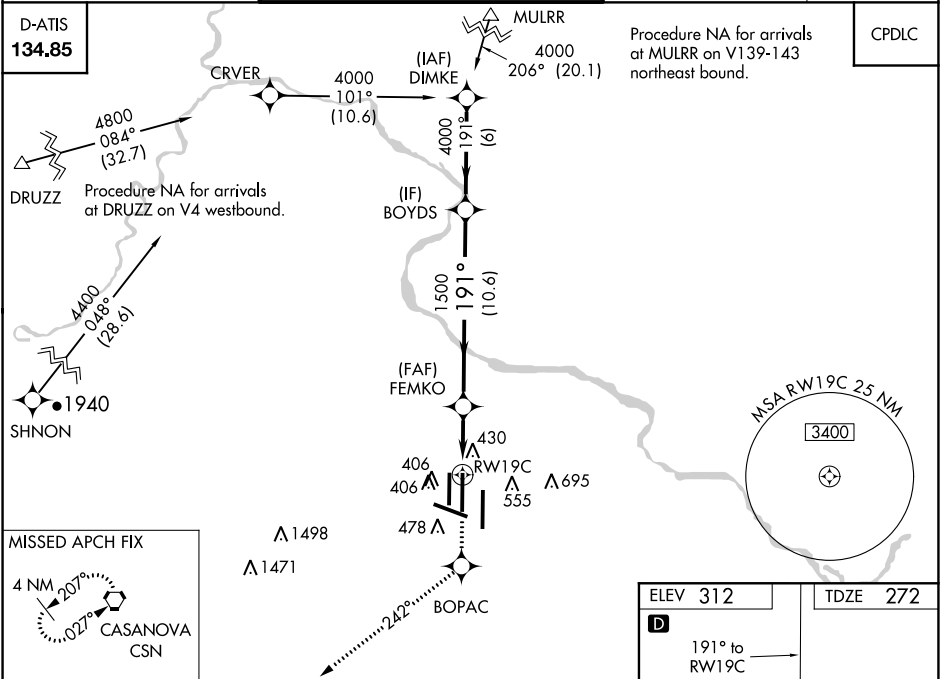
RNAV (GPS) Y RWY 19C
WASHINGTON DULLES INTL (IAD)

▼ For inoperative ALSF-2, increase LNAV Cat D visibility to RVR 6000. For uncompensated Baro-VNAV systems, LNAV/VNAV NA below -15°C (5°F) or above 47°C (116°F). DME/DME RNP-0.3 NA. Simultaneous approach authorized with ILS or LOC Rwy 19L, ILS Rwy 19L (Cat II). LNAV procedure NA during simultaneous operations. Use of FD or AP providing RNAV track guidance required during simultaneous operations.

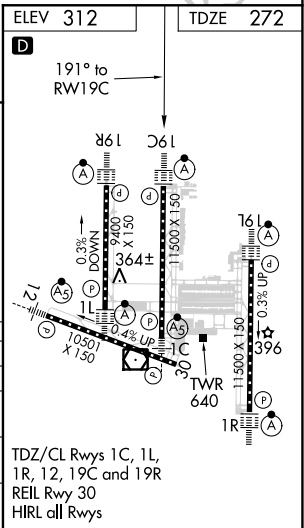
ALSF-2

MISSED APPROACH: Climb to 4000 direct BOPAC and on 242° track to CSN VORTAC and hold.

POTOMAC APP CON 120.45 306.925 (241°-330°) 128.525 306.925 (091°-240°) 126.1 338.25 (331°-090°)	DULLES TOWER 120.1 317.8 (Rwy 1R/19L) 120.25 348.6 (Rwy 1C/19C) 134.425 348.6 (Rwys 1L/19R and 12/30)	GND CON 121.9 317.8 (EAST) 121.625 348.6 (WEST)	CLNC DEL 135.7 317.8
---	---	---	--------------------------------



4000	BOPAC	CSN	VGSI and RNAV glidepath not coincident (VGSI Angle 3.00°/TCH 72).	BOYDS
*LNAV only. *1.1 NM to RWY 19C				
FEMKO				
191°				
1500				
Procedure Turn NA				
GP 3.00°				
TCH 54				
CATEGORY	A	B	C	D
LPV DA	472/18 200 (200-½)			
LNAV/VNAV DA	717/50 445 (500-1)			
LNAV MDA	700/24	428 (400-½)	700/40 428 (400-¾)	700/50 428 (400-1)
CIRCLING	940-1	628 (700-1)	940-1¾ 628 (700-1¾)	940-2 628 (700-2)



NE-3, 03 DEC 2020 to 31 DEC 2020

NE-3, 03 DEC 2020 to 31 DEC 2020