

APP CRS 191°	Rwy Idg 11500 TDZE 302 Apt Elev 312
------------------------	--

RNAV (RNP) Z RWY 19L
WASHINGTON DULLES INTL (IAD)


T GPS required. For uncompensated Baro-VNAV systems, procedure NA below -14°C (6°F) or above 47°C (118°F). For inoperative MALS, increase RNP 0.30 visibility to 1½. Simultaneous approach authorized with ILS or LOC/DME Rwy 19R, ILS Rwy 19R (Cat III), ILS Rwy 19R (Cat III). Use of FD or AP providing RNAV track guidance required during simultaneous operations.

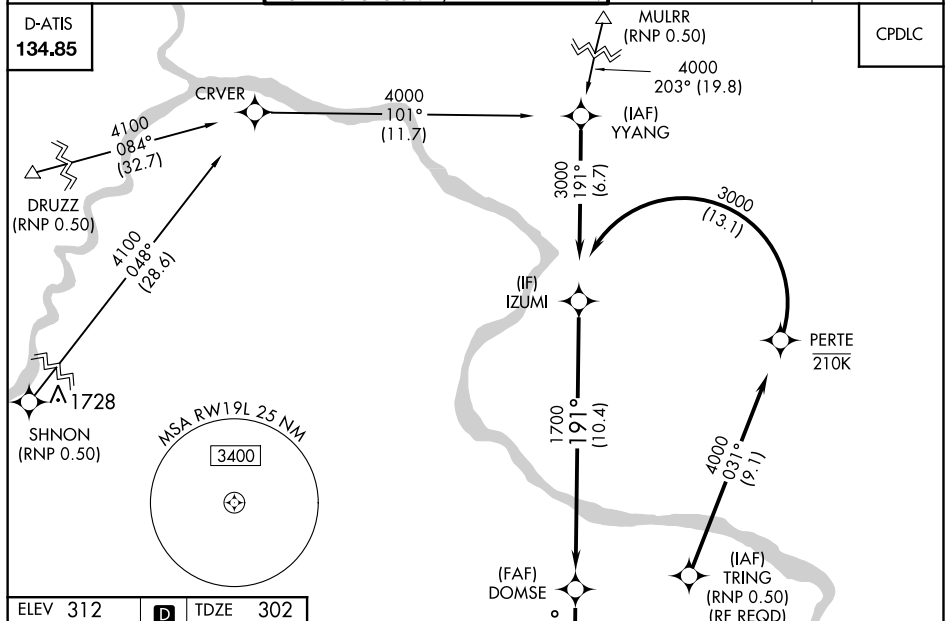
ALSF-2



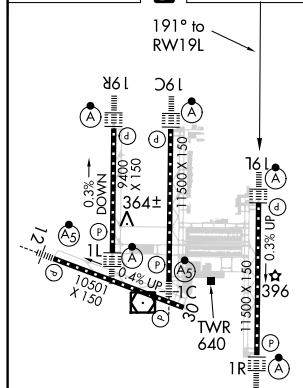
MISSED APPROACH: Climb to 2000 via track 191° to WAXIN and hold.

POTOMAC APP CON	DULLES TOWER	GND CON	CLNC DEL
120.45 306.925 (241°-330°)	120.1 317.8 (Rwy 1R/19L)	121.9 317.8 (EAST)	
128.525 306.925 (091°-240°)	120.25 348.6 (Rwy 1C/19C)	121.625 348.6 (WEST)	135.7 317.8
126.1 338.25 (231°-090°)	134.425 348.6 (Rwys 1L/19R and 12/30)		


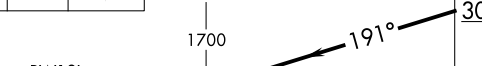
D-ATIS 134.85	 MULRR (RNP 0.50)	CPDLC
-------------------------	--	-------



ELEV 312	D	TDZE 302
----------	----------	----------



TDZ/CL 1C, 1L, 1R, 12,
19C and 19R
REIL Rwy 30
HIRL a|| Rwy 5

2000 ↑	tr 191°	WAXIN 	VGS1 and RNAV glidepath not coincident (VGS1 Angle 3.00°/TCH 75).		Procedure Turn NA
			GP 3.00° TCH 55		
CATEGORY	A	B	C	D	
RNP 0.30 DA	743/50 441 (500-1)				
AUTHORIZATION REQUIRED					