

WAAS CH 86709 W19D	APP CRS 191°	Rwy Idg 9400 TDZE 278 Apt Elev 312
--	------------------------	---

RNAV (GPS) RWY 19R
WASHINGTON DULLES INTL (IAD)

WASHINGTON DULLES INTL (IAD)

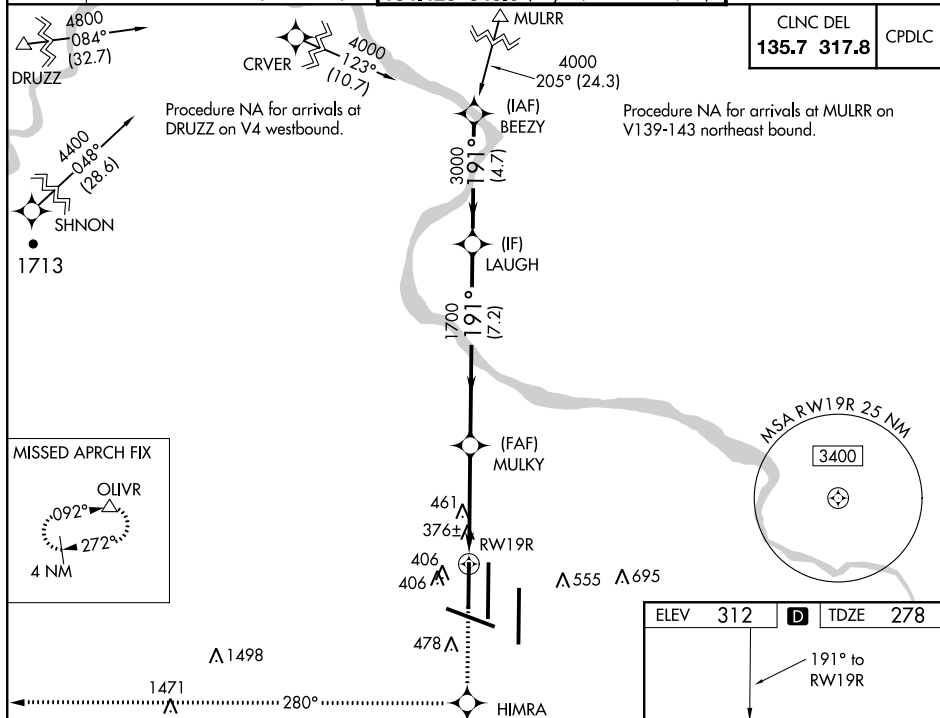
T For uncompensated Baro-VNAV systems, LNAV/VNAV NA below -15°C (5°F) or above 48°C (118°F). DME/DME RNP -0.3 NA. Simultaneous approach authorized with ILS or LOC Rwy 19L, ILS Rwy 19L (Cat II). LNAV procedure NA during simultaneous operations. Use of FD or AP providing RNAV track guidance required during simultaneous operations.

ALSF-2



MISSED APPROACH: Climb to 5000 direct HIMRA and on 280° track to OLVR and hold, continue climb-in-hold to 5000.

	POTOMAC APP CON	DULLES TOWER	GND CON
D-ATIS	120.45 306.925 (241°-330°)	120.1 317.8 (Rwy 1R/19L)	121.9 317.8 (EAST)
134.85	128.525 306.925 (091°-240°)	120.25 348.6 (Rwy 1C/19C)	121.625 348.6 (WEST)
	126.1 338.25 (331°-090°)	134.425 348.6 (Rwy 1L/19R and 12/30)	



Procedure **VGSI and RNAV glidepath not coincident (VGSI Angle 3.00°/TCH 70).**

Turn NA **LAUGH** **3000** **191°** **MULKY** **1700** **5000** **HIMRA** **tr 280°** **OLVR** **△**

GP 3.00° TCH 55 **1700** ***1.2 NM to RW19R** ***RNAV only.**

7.2 NM **3.1 NM** **1.2**

CATEGORY	A	B	C	D
LPV DA		478/18	200 (200-½)	
RNAV/ VNAV DA		714/50	436 (500-1)	
RNAV MDA	720/24	442 (500-½)	720/40 442 (500-¾)	720/50 442 (500-1)
CIRCLING	940-1	628 (700-1)	940-1¾ 628 (700-1¾)	940-2 628 (700-2)

