

WAAS CH 86310 W12A	APP CRS 121°	Rwy ldg 10501 TDZE 310 Apt Elev 312
--	------------------------	--

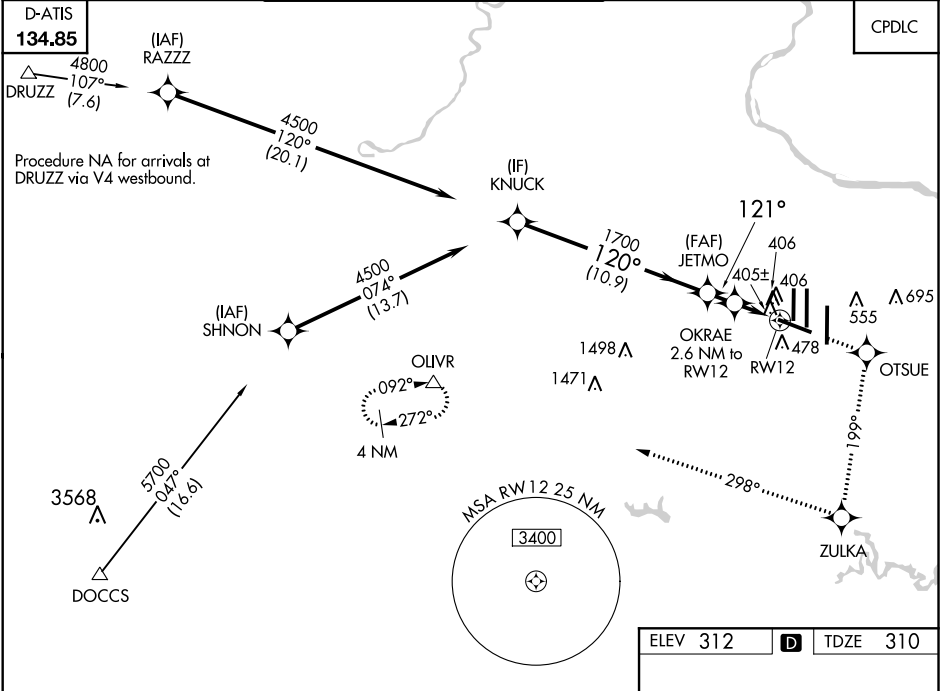
RNAV (GPS) RWY 12
WASHINGTON DULLES INTL (IAD)

▼ For inoperative MALS, increase LNAV Cat D visibility to RVR 6000.
For uncompensated Baro-VNAV systems, LNAV/VNAV NA below -15°C (5°F) or above 48°C (118°F). DME/DME RNP-0.3 NA.

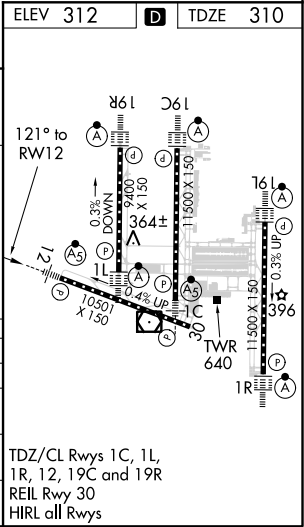
MALS

MISSED APPROACH: Climb to 4000 direct OTSUE and via 199° track to ZULKA and right turn via 298° track to OLIVR and hold.

POTOMAC APP CON 120.45 306.925 (241°-330°) 128.525 306.925 (091°-240°) 126.1 338.25 (331°-090°)	DULLES TOWER 120.1 317.8 (Rwy 1R/19L) 120.25 348.6 (Rwy 1C/19C) 134.425 348.6 (Rwys 1L/19R and 12/30)	GND CON 121.9 317.8 (EAST) 121.625 348.6 (WEST)	CLNC DEL 135.7 317.8
---	---	---	--------------------------------



VGSI and RNAV glidepath not coincident (VGSI Angle 3.00/TCH 66).				
↑ 4000 OTSUE tr 199° ZULKA tr 298° OLIVR				
* LNAV only.				
Procedure Turn NA				
GP 3.00° TCH 49				
10.9 NM 1.6 NM 1.6 NM 1 NM				
CATEGORY	A	B	C	D
LPV DA	510/18		200 (200-½)	
LNAV/VNAV DA	737/50		427 (500-1)	
LNAV MDA	680/24		370 (400-½)	
CIRCLING	940-1 628 (700-1)		940-2 628 (700-2)	



NE-3, 03 DEC 2020 to 31 DEC 2020

NE-3, 03 DEC 2020 to 31 DEC 2020