


ILS or LOC RWY 19L
WASHINGTON DULLES INTL (IAD)

ALSF-2

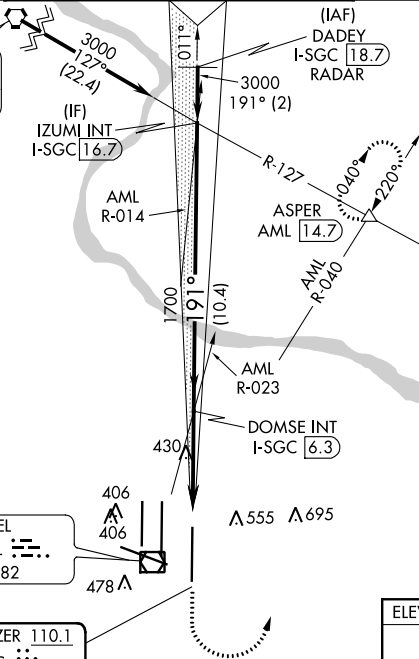
MISSED APPROACH: Climb to 800 then climbing left turn to 3000 on heading 010° and AML VOR/DME R-040 to ASPER INT/AML 14.7 DME and hold.

D-ATIS
134.85

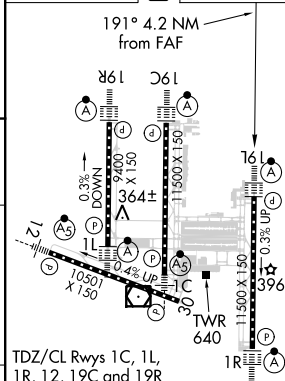
IAF
MARTINSBURG
112.1 MRB 
Chan 58

Procedure NA for arrivals
at MRB VORTAC on
airway radials 088 CW 137.

CPDLC



ELEV 313	D	TDZE 302
----------	----------	----------



TDZ/CL Rwy 1C, 1L,
1R, 12, 19C and 19R
REIL Rwy 30
HRL all Rwys

FAF to MAP 4.2 NM					
Knots	60	90	120	150	180
Min:Sec	4:12	2:48	2:06	1:41	1:22