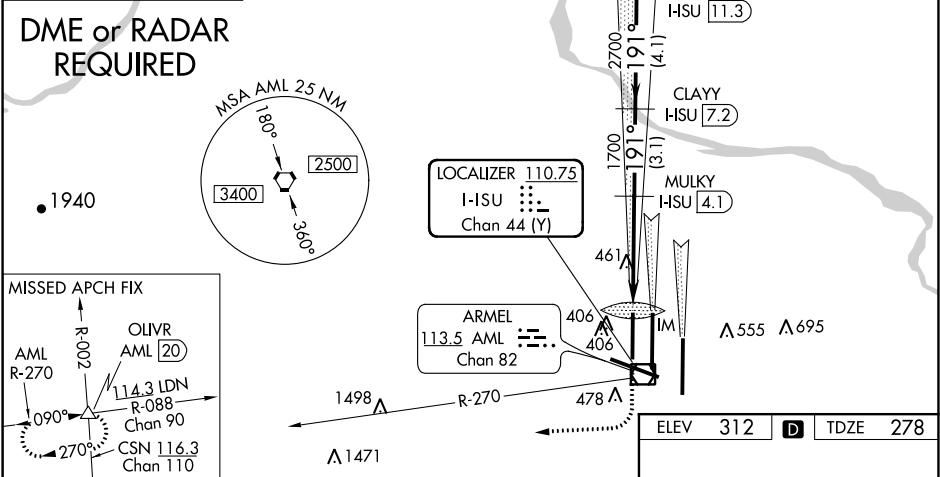
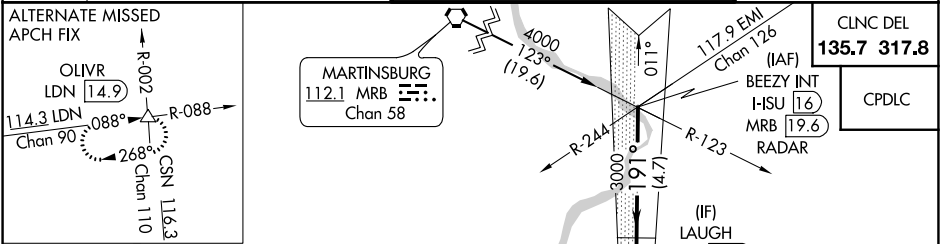


LOC/DME I-LSU 110.75 Chan 44 (Y)	APP CRS 191°	Rwy Idg TDZE Apt Elev 9400 278 312
--	------------------------	--

ILS RWY 19R (CAT II & III)
WASHINGTON DULLES INTL (IAD)

Simultaneous approach authorized with ILS or LOC/DME Rwy 19C, ILS Rwy 19C (Cat II), ILS Rwy 19C (Cat III), Rwy 19L.	ALSIF-2 (A)	MISSED APPROACH: Climb to 800 then climbing right turn to 5000 via AML VOR/DME R-270 to OLVR INT/AML 20 DME and hold, continue climb-in-hold to 5000.
--	------------------------------	--

D-ATIS 134.85	POTOMAC APP CON 120.45 306.925 (241°-330°) 128.525 306.925 (091°-240°) 126.1 338.25 (331°-090°)	DULLES TOWER 120.1 317.8 (Rwy 1R/19L) 120.25 348.6 (Rwy 1C/19C) 134.425 348.6 (Rwys 1L/19R and 12/30)	GND CON 121.9 317.8 (EAST) 121.625 348.6 (WEST)
-------------------------	---	---	---



BEEZY INT HISU [16] RADAR	LAUGH HISU [11.3]	CLAYY HISU [7.2]	MULKY HISU [4.1]	HISU DME ANTENNA	IM	378
4000	3000	2700	1700	1700	1050	
GS 3.00° TCH 55	4.7 NM	4.1 NM	3.1 NM	4.3 NM	1050	
CATEGORY	A	B	C	D		
S-ILS 19R		CAT II	RA 103/12	100 DA 378		
S-ILS 19R			CAT IIIa	RVR 07		
S-ILS 19R			CAT IIIb	RVR 06		
S-ILS 19R			CAT IIIc	NA		

CATEGORY II & III ILS - SPECIAL AIRCREW
& AIRCRAFT CERTIFICATION REQUIRED

