

WASHINGTON, DC

D-ATIS	1134.85
CLINC D	1135.7
CPDLC	
GND CO	1121.9
	1121.625
DULLES	
	1120.1
	1120.25
	1134.425
POTOM	
	1126.65

Rwys 1L/C/R, 19L/C/R, 30:  
Standard with minimum climb  
of 500' per NM to 820.



P-56B

P-56A

**TOP ALTITUDE:**  
**3000**

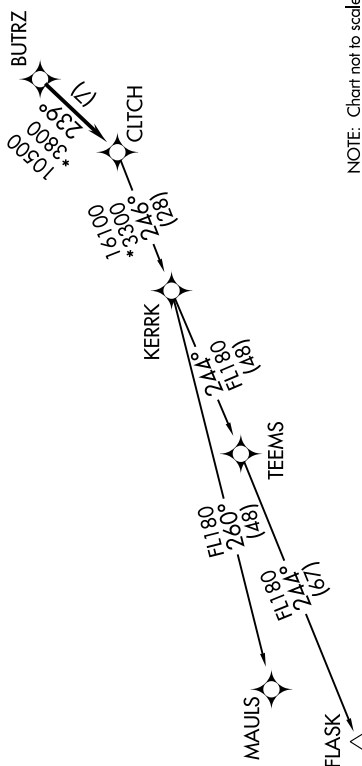
DEPARTURE ROUTE DESCRIPTION

TAKEOFF RWY 1L, 1C, 1R, 19C, 19L, 19R, 30:

Climb on heading assigned by ATC, expect RADAR vectors to BUTRZ, then on track 239° to CLTCH, thence . . .

... on assigned transition. Maintain 3000. Expect clearance to filed altitude within ten (10) minutes after departure.

FLASK TRANSITION (CLTCH2.FLASK)  
MAULS TRANSITION (CLTCH2.MAULS)



NOTE: Chart not to scale.

WASHINGTON, DC  
WASHINGTON DULLES INTL (IAD)