

WAAS CH 81802 W23A	APP CRS 229°	Rwy Idg 5219 TDZE 296 Apt Elev 306
--	------------------------	---

RNAV (GPS) Z RWY 23

FREDERICK MUNI (FDK)

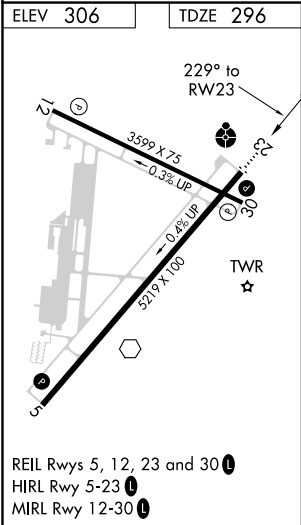
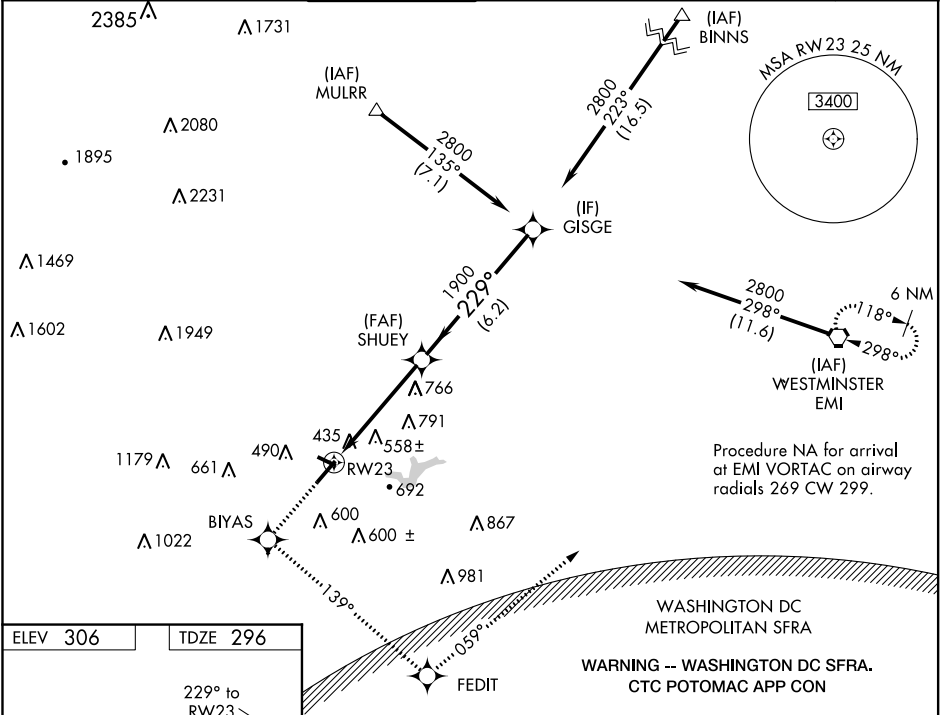
RNP APCH.

Rwy 23 helicopter visibility reduction below ¾ SM NA. Circling Rwy 30 NA at night. For uncompensated Baro-VNAV systems, LNAV/VNAV NA below -1.5°C or above 54°C. Inop table does not apply to LPV, LNAV/VNAV all Cats, and LNAV Cat C.

ODALS

MISSED APPROACH: Climb to 3000 direct BIYAS WP and via 139° track to FEDIT WP and via 059° track to EMI VORTAC and hold.

ATIS 124.875	POTOMAC APP CON 125.525 291.625	FREDERICK TOWER ★ 132.4 (CTAF) 0	GND CON 121.975	CLNC DEL 121.975	CLNC DEL 126.9 (When twr closed)	UNICOM 122.95
------------------------	---	---	---------------------------	----------------------------	---	-------------------------



3000	BIYAS	FEDIT	EMI	VGSI and RNAV glidepath not coincident (VGSI Angle 3.00/TCH 40).
	tr 139°	tr 059°		
*LNAV only.				
			SHUEY	GISGE
			2800	
			1900	
			2.2	2.7 NM
			6.2 NM	
CATEGORY	A	B	C	D
LPV DA	690-1½ 394 (400-1½)			
LNAV/VNAV DA	1020-2½ 724 (800-2½)			
LNAV MDA	1020-¾ 724 (800-¾)	1020-2 724 (800-2)	1020-2½ 724 (800-2½)	1020-2½ 724 (800-2½)
CIRCLING	1020-1 714 (800-1)	1100-2¼ 794 (800-2¼)	1200-2¾ 894 (900-2¾)	

NE-3, 03 DEC 2020 to 31 DEC 2020

NE-3, 03 DEC 2020 to 31 DEC 2020