

LOC I-FDK <b>110.3</b>	APP CRS <b>229°</b>	Rwy ldg TDZE Apt Elev <b>5219</b> <b>297</b> <b>306</b>
---------------------------	------------------------	--

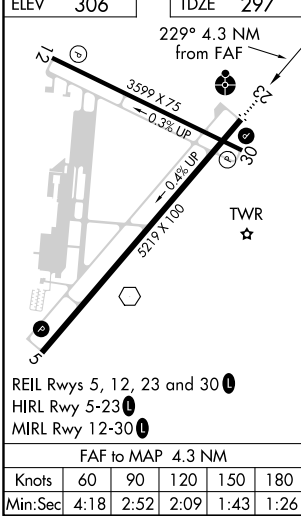
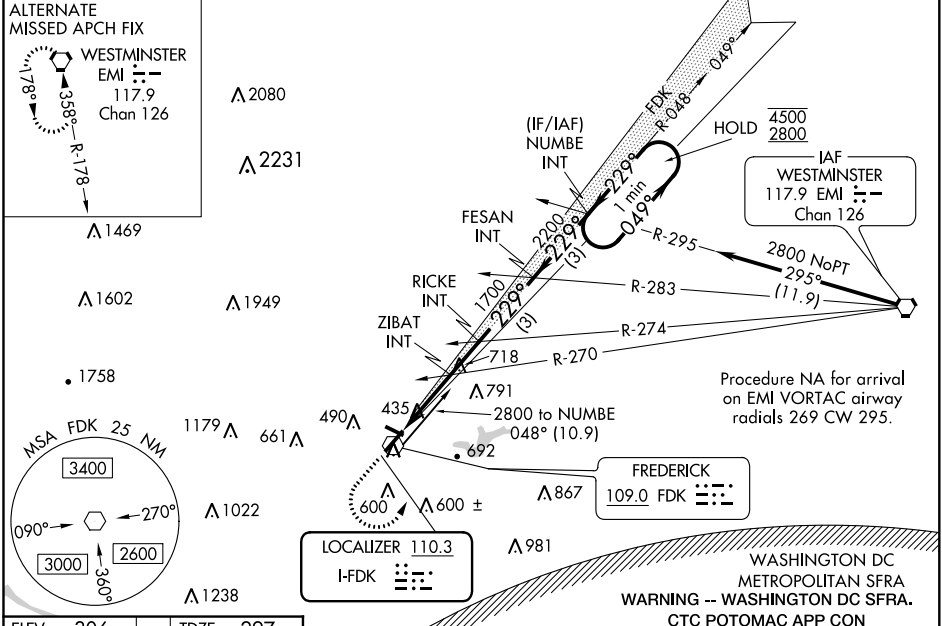
ILS or LOC RWY 23  
FREDERICK MUNI (F'DK)

**⚠** Circling Rwy 30 NA at night. Rwy 23 helicopter visibility reduction below 3/4 NA. For inop ALS, increase S-ILS 23 Cat A/B visibility to 1 1/2 SM. For inop ALS, increase S-LOC 23 Cat C/D visibility to 2 1/2 SM. ZIBAT fix minimums: Inop table does not apply to S-LOC 23 Cats C/D.

**ODALS**

**MISSED APPROACH:** Climb to 1300 then climbing left turn to 2800 on FDK VOR R-048 to NUMBE INT and hold.

ATIS <b>124.875</b>	POTOMAC APP CON <b>125.525 291.625</b>	FREDERICK TOWER ★ <b>132.4</b> (CTAF) <b>0</b>	GND CON <b>121.975</b>	CLNC DEL <b>121.975</b>	CLNC DEL <b>126.9</b> (When twr closed)	UNICOM <b>122.95</b>
------------------------	---	---	---------------------------	----------------------------	---	-------------------------



1300 2800		VGSI and ILS glidepath not coincident (VGSI Angle 3.00/TCH 40).		One Minute Holding Pattern	
NUMBE INT		FESAN INT		NUMBE INT	
* LOC only.		RICKE INT		049° → 4500	
ZIBAT INT		1700		← 229° 2800	
*1080		2200		GS 3.00° TCH 54	
2.8 NM		1.5 NM		3 NM	
CATEGORY	A	B	C	D	
S-ILS 23		689-1	392 (400-1)		
S-LOC 23	1080-3/4 783 (800-3/4)	1080-1 783 (800-1)	1080-2 783 (800-2)		
CIRCLING	1080-1 774 (800-1)	1080-1 1/4 774 (800-1 1/4)	1100-2 1/2 794 (800-2 1/2)	1140-2 3/4 834 (900-2 3/4)	
ZIBAT FIX MINIMUMS (DUAL VOR RECEIVERS REQUIRED)					
S-LOC 23	1020-3/4 723 (800-3/4)		1020-2 723 (800-2)		
CIRCLING	1020-1 714 (800-1)		1100-2 1/4 794 (800-2 1/4)	1140-2 3/4 834 (900-2 3/4)	

NE-3, 03 DEC 2020 to 31 DEC 2020

NE-3, 03 DEC 2020 to 31 DEC 2020