



LOC I-PSK	APP CRS	Rwy Idg	6201
110.9	058°	TDZE	2105
		Apt Elev	2105

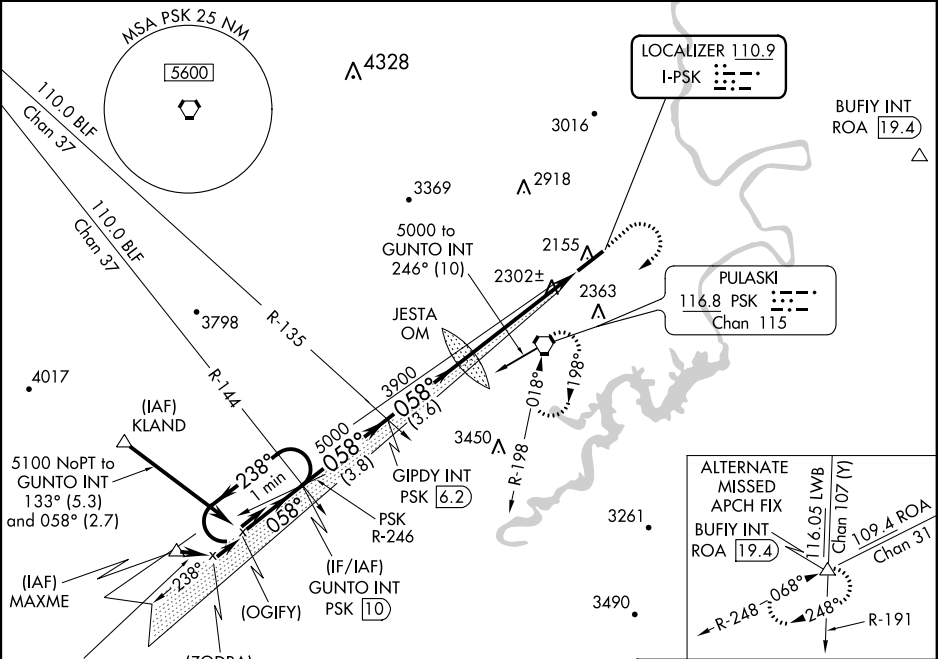
ILS or LOC Z RWY 6
NEW RIVER VALLEY (PSK)

NA When local altimeter setting not received, use Blacksburg altimeter setting and increase all DA 36 feet, and all MDA 40 feet. Inop table does not apply to S-ILS 6 all Cats and S-LOC 6 Cats A and B. For inop MALSR, increase S-LOC 6 Cat C visibility to 1 1/4 SM.

MALSR 

MISSED APPROACH: Climb to 3000 then climbing right turn to 5000 direct PSK VORTAC and hold.

AWOS-3 127.375	ROANOKE APP CON 126.0 339.8	ROANOKE CLNC DEL 121.7	UNICOM 122.7 (CTAF) 
-------------------	--------------------------------	---------------------------	--



VGSI and RNAV glidepath not coincident (VGSI Angle 3.00/TCH 58).				
One Minute Holding Pattern				
GUNTO INT PSK 10 GIPDY INT PSK 6.2 JESTA OM 3823 3900				
5000 ← 238° 058° → 5000				
GS 3.00° TCH 58				
3.8 NM 3.6 NM 5.1 NM				
CATEGORY	A	B	C	D
S-ILS 6		2305-1	200 (200-1)	
S-LOC 6		2560-1	455 (500-1)	
CIRCLING	2620-1	515 (600-1)	2620-1 1/2 515 (600-1 1/2)	2680-2 575 (600-2)

