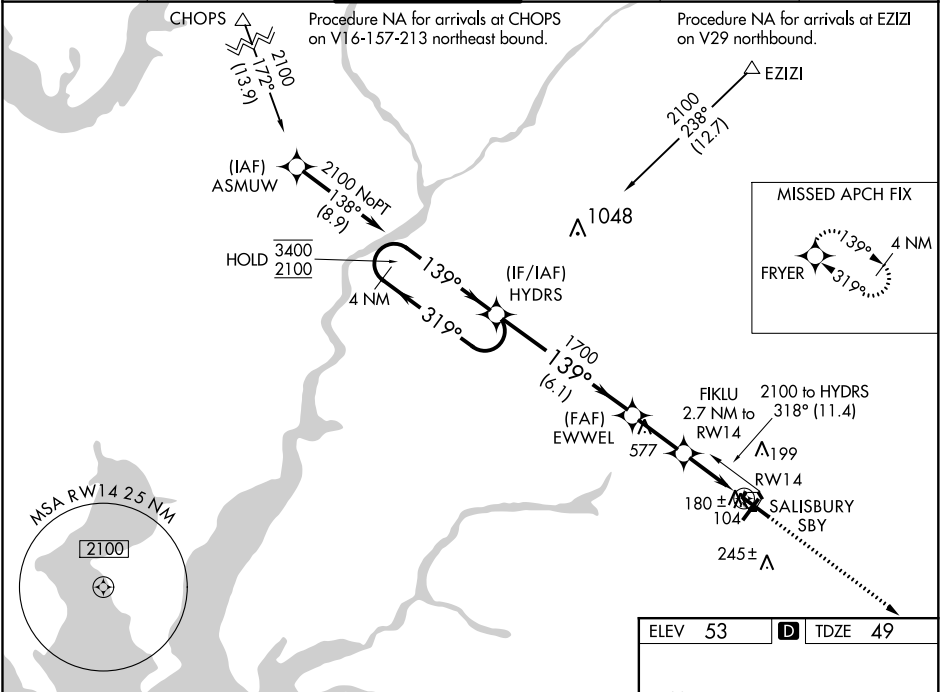


WAAS CH 56320 W14A	APP CRS 139°	Rwy Idg TDZE Apt Elev	6400 49 53
--	------------------------	-----------------------------	---------------------------------------

RNAV (GPS) RWY 14
SALISBURY-OCEAN CITY WICOMICO RGNL (SBY)

RNP APCH.		MISSED APPROACH: Climb to 2000 direct FRYER and hold.	
Rwy 14 helicopter visibility reduction below ¾ SM NA. For uncompensated Baro-VNAV systems, LNAV/VNAV NA below -16° C or above 54° C.			

ASOS 118.325	PATUXENT APP CON ★ 127.95 314.0	SALISBURY TOWER ★ 119.425 (CTAF) 0	GND CON 123.775	CLNL DEL ★ 123.775	UNICOM 122.95
------------------------	---	---	---------------------------	------------------------------	-------------------------



4 NM Holding Pattern		HYDRS		EWWEL		FIKLU 2.7 NM to RW14		2000 ↑		FRYER ✦	
3400 ← 319° 2100 → 139°		139°		1700		*1.1 NM to RW14		*LNAV only		RW14	
GP 3.00° TCH 45		1700		*940		1.6 NM		1.1 NM			
		6.1 NM		2.3 NM		1.6 NM		1.1 NM			
CATEGORY		A		B		C		D			
LPV DA				363-1		314 (400-1)					
LNAV/ VNAV DA				453-1½		404 (400-1½)					
LNAV MDA		440-1		391 (400-1)		440-1½ 391 (400-1½)		440-1¼ 391 (400-1¼)			
CIRCLING		480-1 427 (500-1)		520-1 467 (500-1)		560-1½ 507 (600-1½)		700-2 647 (700-2)			

