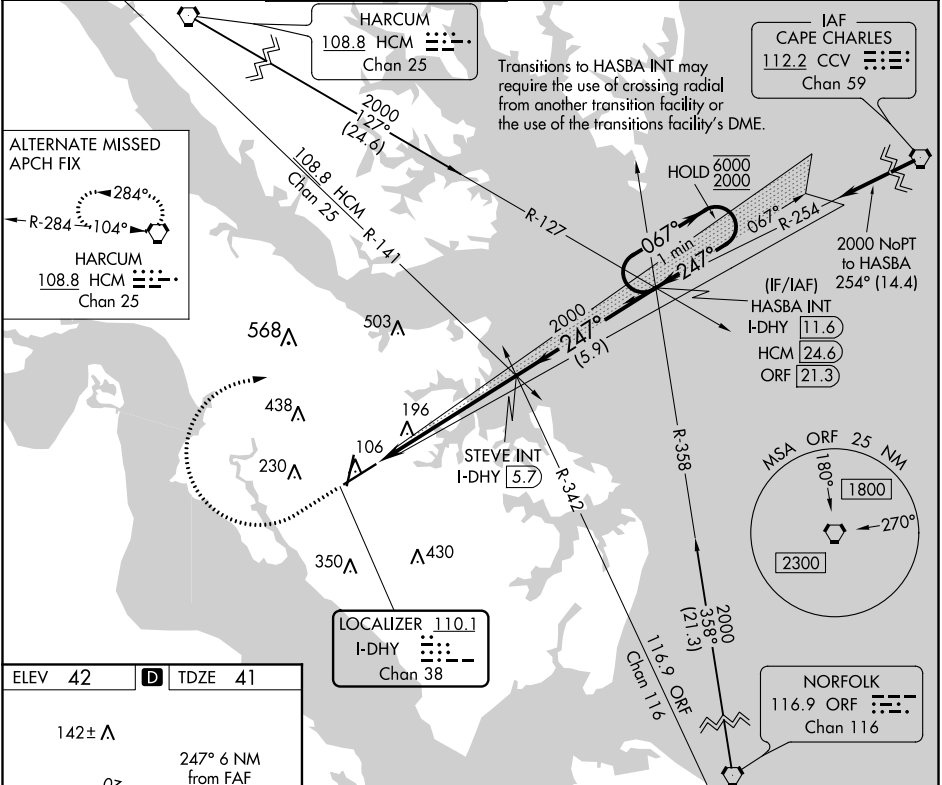


LOC/DME I-DHY	APP CRS	Rwy Idg	8003
110.1	247°	TDZE	41
Chan 38		Apt Elev	42

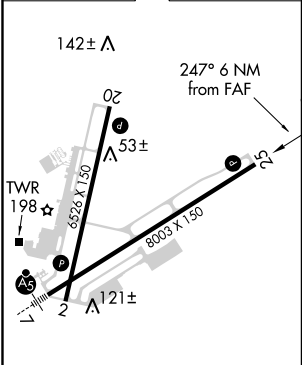
ILS or LOC RWY 25
NEWPORT NEWS/WILLIAMSBURG INTL (PHF)

MISSED APPROACH: Climb to 500 then climbing right turn to 2500 on heading 080° and CCV VORTAC R-254 to HASBA INT/I-DHY 11.6 DME and hold.

ATIS 128.65	NORFOLK APP CON 125.7	NEWPORT NEWS TOWER ★ 118.7 (CTAF) 0 257.9	GND CON 121.9 348.6	CLNC DEL 121.65 225.4	UNICOM 122.95
-----------------------	---------------------------------	--	-------------------------------	---------------------------------	-------------------------



ELEV 42	TDZE 41
---------	---------



REIL Rwy 20 and 25	HIRL Rwy 2-20 and 7-25
FAF to MAP 6 NM	
Knots	60 90 120 150 180
Min:Sec	6:00 4:00 3:00 2:24 2:00

500	2500	CCV R-254	HASBA INT	VGSI and ILS glidepath not coincident (VGSI Angle 3.00/TCH 71).	One Minute Holding Pattern
		STEVE INT I-DHY 5.7	HASBA INT I-DHY 11.6		
*LOC only		*I-DHY 0.9	2000	247°	067° → 6000
		I-DHY 0.3	2000	← 247°	← 2000
		1.2	4.8 NM	5.9 NM	GS 3.00° TCH 55
CATEGORY	A	B	C	D	
S-ILS 25	241-¾ 200 (200-¾)				
S-LOC 25	480-1 439 (500-1)		480-1¼ 439 (500-1¼)		
CIRCLING	520-1 478 (500-1)	540-1 498 (500-1)	760-2 718 (800-2)	780-2¼ 738 (800-2¼)	

NE-3, 03 DEC 2020 to 31 DEC 2020

NE-3, 03 DEC 2020 to 31 DEC 2020