


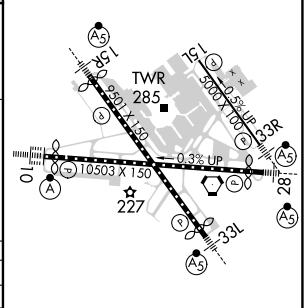
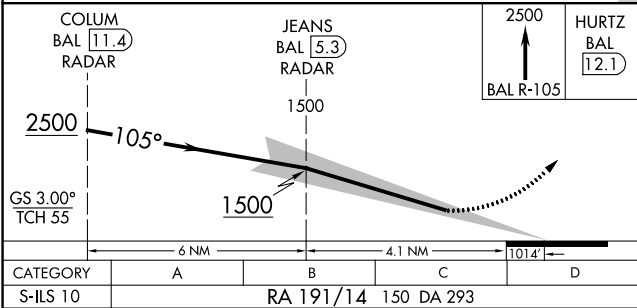
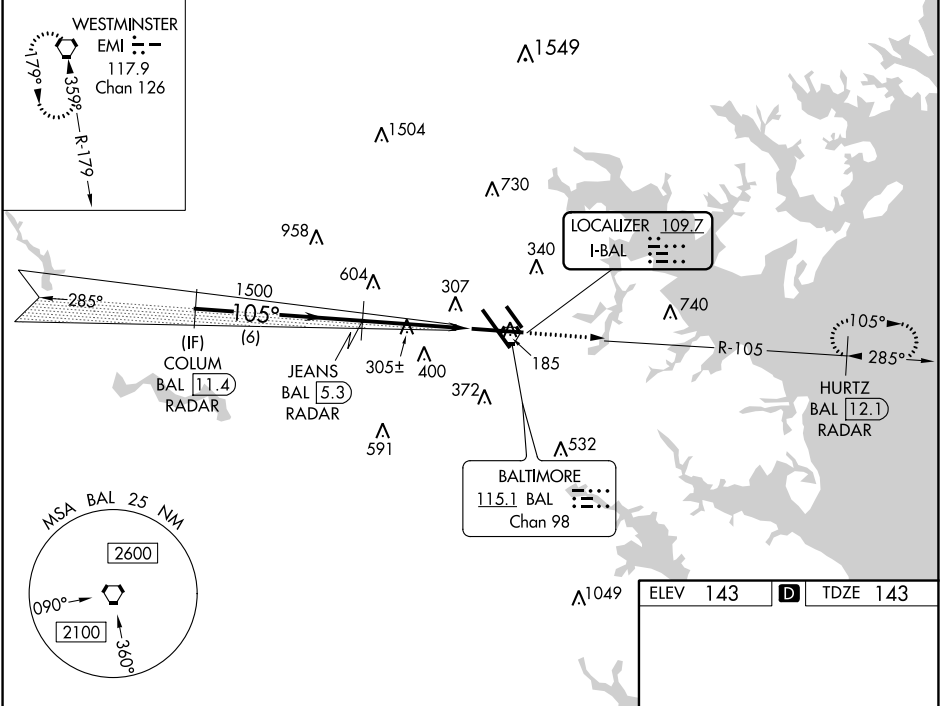
LOC I-BAL 109.7	APP CRS 105°	Rwy Idg 9953 TDZE 143 Apt Elev 143
---------------------------	------------------------	---

BALTIMORE/
WASHINGTON INTL THURGOOD MARSHALL (BWI) **ILS RWY 10 (SA CAT I)**

RADAR required for procedure entry. DME required.		ALSIF-2 	MISSED APPROACH: Climb to 2500 on BAL VORTAC R-105 to HURTZ/BAL 12.1 DME/RADAR and hold.
Requires specific OPSPEC, MSPEC, or LOA approval and use of HUD to DH.			

D-ATIS 115.1 127.8	POTOMAC APP CON 119.0 282.275 (020°-100°) 119.7 290.475 (131°-180°) 124.55 317.425 (101°-130°) 128.7 307.9 (181°-019°)	BALTIMORE TOWER 119.4 257.8	GND CON 121.9	CLNC DEL 118.05
------------------------------	--	---------------------------------------	-------------------------	---------------------------

ALTERNATE MISSED APCH FIX	CPDLC
------------------------------	-------



**SA CATEGORY I ILS - SPECIAL AIRCREW
& AIRCRAFT CERTIFICATION REQUIRED**

TDZ/CL Rwy 10 and 33L
REIL Rwy 15L and 33R
HIRL all rwy's