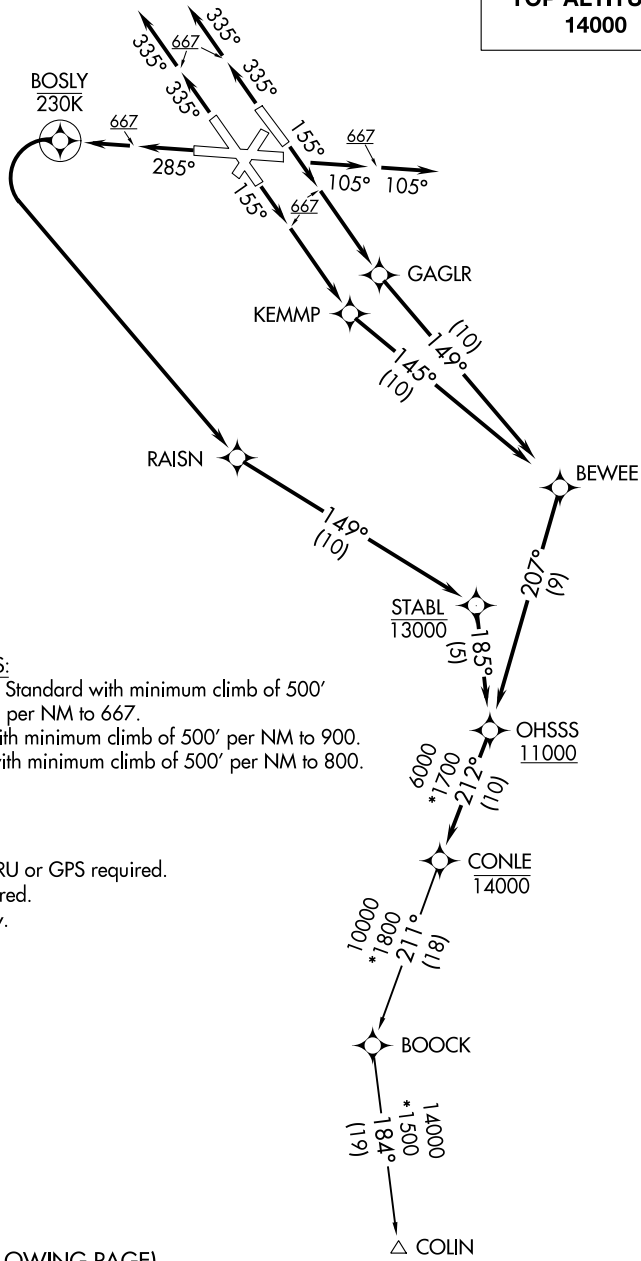


D-ATIS
115.1 127.8
CLNC DEL
118.05
CPDLC
GND CON
121.9
BALTIMORE TOWER
119.4 257.8
POTOMAC DEP CON
124.55 317.425

TOP ALTITUDE:
14000



TAKEOFF MINIMUMS:
Rwys 10, 15L/R, 28: Standard with minimum climb of 500' per NM to 667.
Rwy 33L: Standard with minimum climb of 500' per NM to 900.
Rwy 33R: Standard with minimum climb of 500' per NM to 800.

NOTE: RNAV 1
NOTE: DME/DME/IRU or GPS required.
NOTE: RADAR required.
NOTE: Turbojets only.

(NARRATIVE ON FOLLOWING PAGE)
(NOTES CONTINUED ON FOLLOWING PAGE)

NOTE: Chart not to scale.

NE-3, 03 DEC 2020 to 31 DEC 2020

NE-3, 03 DEC 2020 to 31 DEC 2020