


DOVER, DELAWARE

## RNAV (GPS) RWY 1

WAAS CH <b>52207</b> W01A	APCH CRS 015°	Rwy Idg <b>9602</b> TDZE <b>25</b> Arpt Elev <b>29</b>
---------------------------------	------------------	--

AL-562 (USAF)

DOVER AFB (KDOV)

<p><b>V</b> * When ALS inop increase RVR to 40, vis to 3/4 mile. When TDZ/CL lights inop increase RVR to 24.</p> <p>** When ALS inop, increase CAT AB RVR to 45, vis to 7/8 mile; CAT CD RVR to 50, vis to 1 mile.</p> <p>*** When ALS inop increase CAT AB RVR to 55, vis to 1 mile; CAT CD vis to 1 1/4 miles.</p>	<p><b>ALSF-2</b></p> <div style="display: flex; align-items: center;">  <div style="margin-left: 10px;"> <p><b>MISSED APPROACH:</b> Climb to 2000 direct DEREE and hold, continue climb-in-hold to 2000.</p> </div> </div>
--	---

ATIS 127.825 273.5	APP CON 132.425 257.875	TOWER 126.35 279.625	GND CON 118.875 225.4	CLNC DEL 125.55 289.4
-----------------------	----------------------------	-------------------------	--------------------------	--------------------------

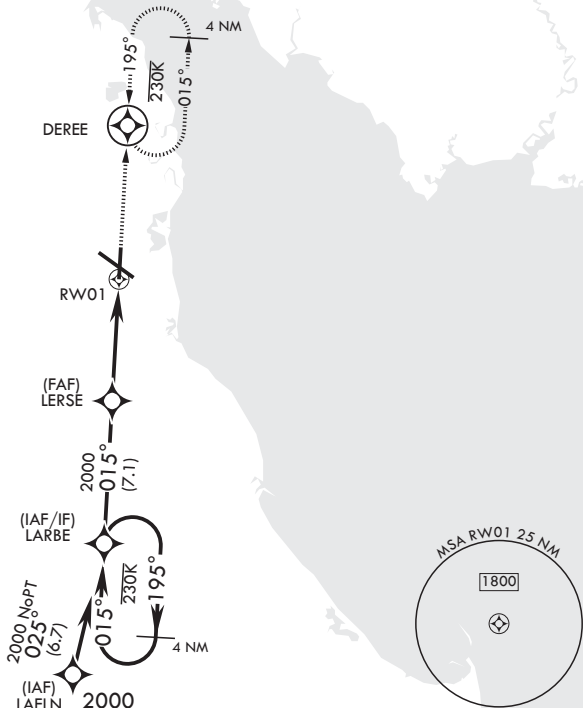
DME/DME RNP - 0.3 NA

Circling visibility reduction  
by helicopters NA.

**CAUTION:** When Rwy 14 VGSI inop, circling to Rwy 14 not authorized at night.

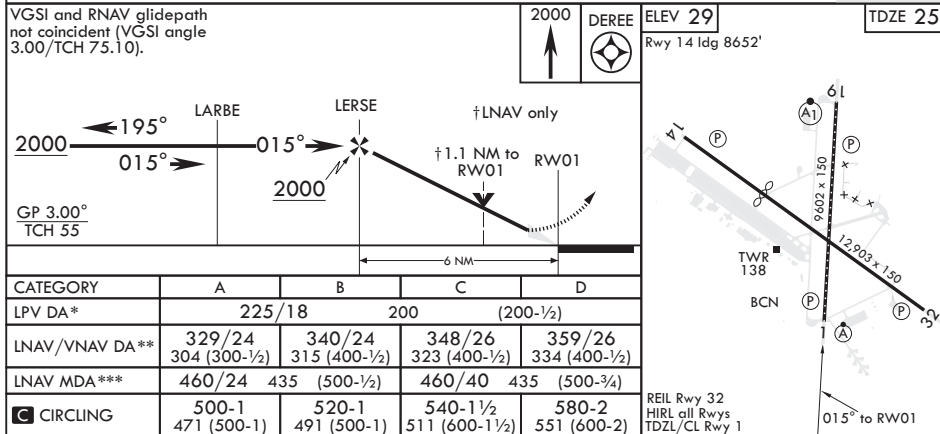
For uncompensated Baro-VNAV systems, Procedure NA below -15°C (5°F) or above 52°C (126°F).

Average Cold Temperature  
based on standard  
-30.00°C ISA deviation.



EMERG SAFE ALT 100 NM 4300

VGSI and RNAV glidepath not coincident (VGSI angle 3.00/TCH 75.10).



DOVER, DELAWARE

39°08'N - 75°28'W

DOVER AFB (KDOV)

Amdt 2 05DEC19  
TERPS

# RNAV (GPS) RWY 1