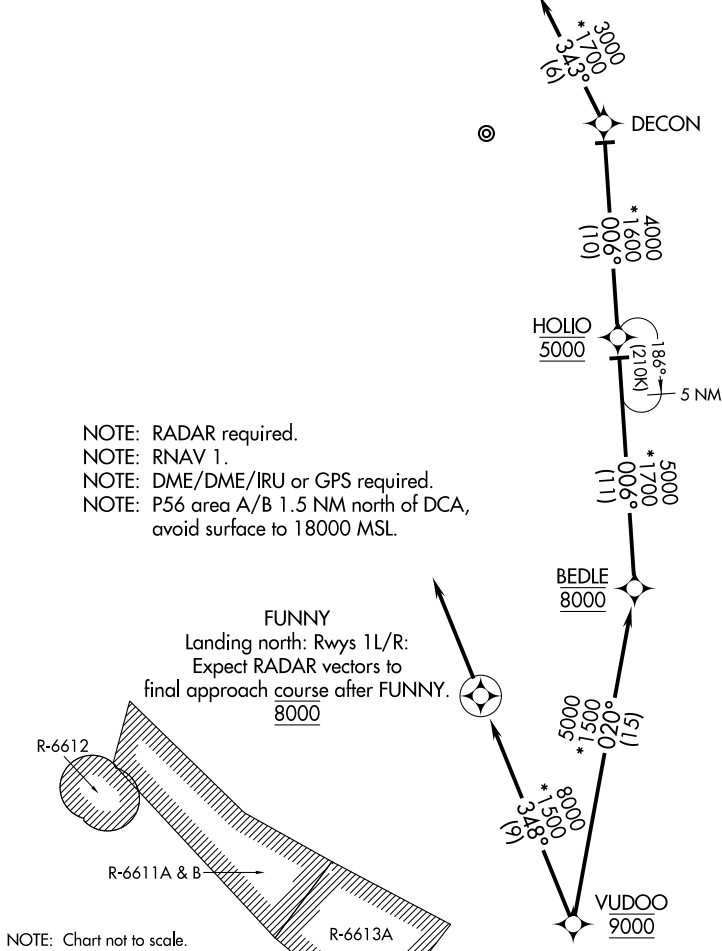


POTOMAC APP CON
126.4 282.375
ATIS
113.1 251.05
TOWER
118.4 349.0

REVOE
Landing south: Rwy 19L/R:
Expect RADAR vectors to
final approach course after REVOE.



ARRIVAL ROUTE DESCRIPTION

LANDING NORTH RWYS 1L/R: From VUDOO on track 348° to cross FUNNY at 8000, then on track 348°. Expect RADAR vectors to final approach course.

LANDING SOUTH RWYS 19L/R: From VUDOO on track 020° to cross BEDLE at 8000, then on track 006° to cross HOLIO at 5000, then on track 006° to DECON, then on track 343° to REVOE, then on track 343°. Expect RADAR vectors to final approach course.

NE-3, 03 DEC 2020 to 31 DEC 2020

NE-3, 03 DEC 2020 to 31 DEC 2020