

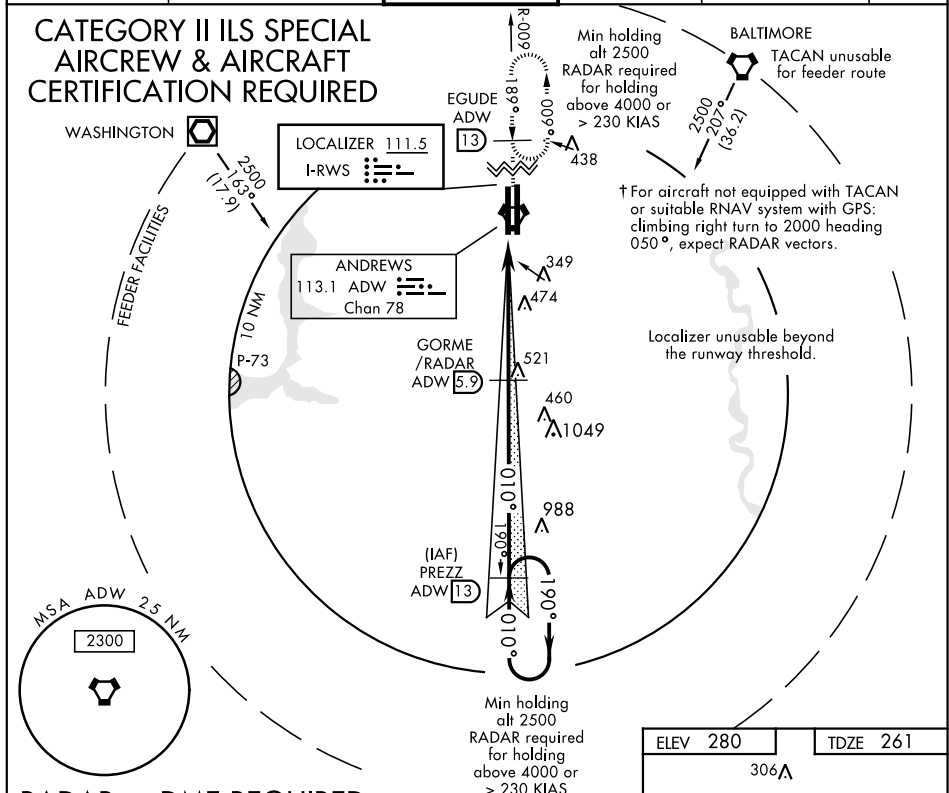


LOC I-RWS <b>111.5</b>		APCH CRS <b>010°</b>		Rwy Idg <b>9318</b> TDZE <b>261</b> Arpt Elev <b>280</b>		AL-561 [USAF]		JOINT BASE ANDREWS (KADW)	
				 ALSF-2		† MISSED APPROACH: Climbing to 2500, intercept ADW VORTAC R-009 to EGUDE and hold.			
ATIS <b>133.675 251.05</b>		POTOMAC APP CON <b>128.0 335.5</b>		ANDREWS TOWER <b>118.4 349.0</b>		GND CON <b>121.8 275.8</b>		CLNC DEL <b>127.55 285.475</b>	
								CPDLC	

CATEGORY II ILS SPECIAL  
AIRCREW & AIRCRAFT  
CERTIFICATION REQUIRED



## RADAR or DME REQUIRED

EMERG SAFE ALT 100 NM 6100

