

## ILS RWY 19R (CAT II)

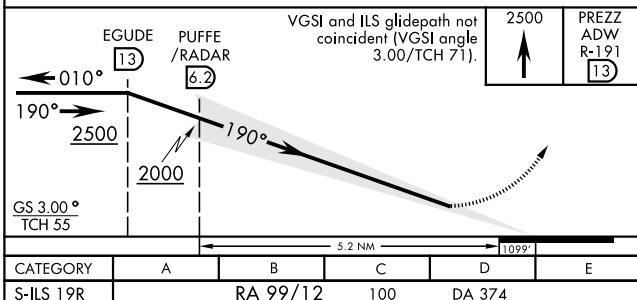
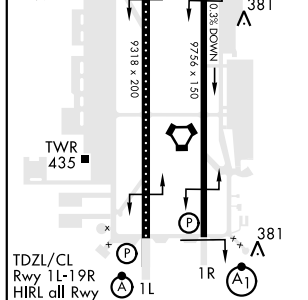
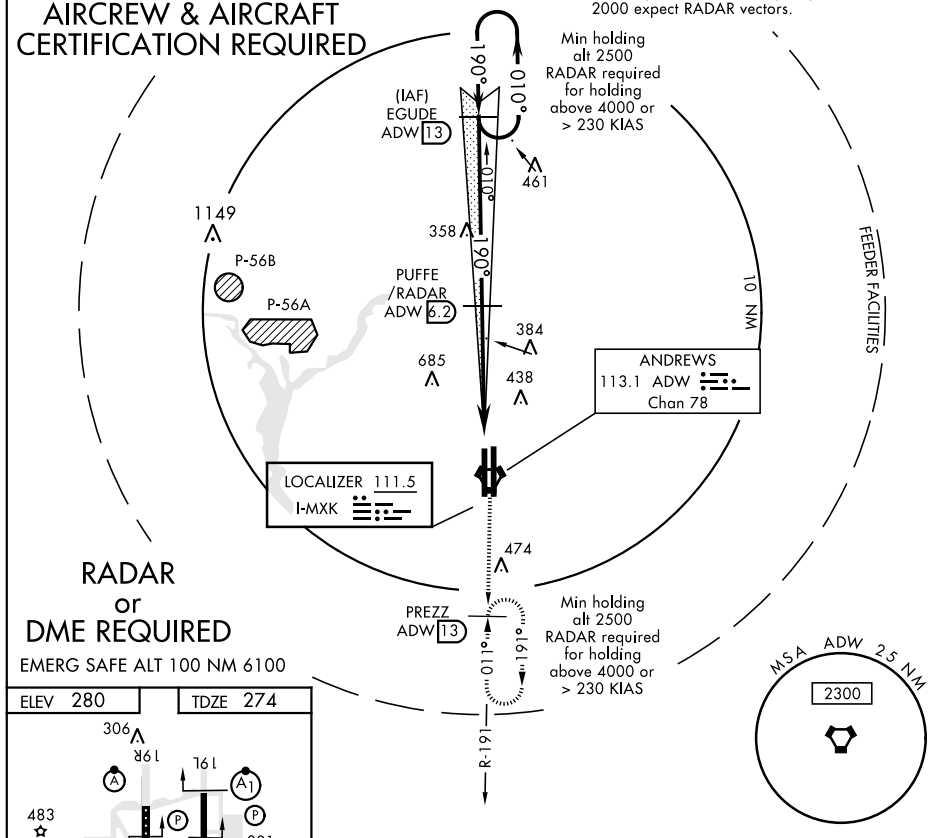
LOC I-MXK <b>111.5</b>	APCH CRS <b>190°</b>	Rwy ldg TDZE Arprt Elev <b>9318</b> <b>274</b> <b>280</b>
---------------------------	-------------------------	--

AL-561 [USAF]

JOINT BASE ANDREWS (KADW)

			† MISSED APPROACH: Climbing to 2500, intercept ADW VORTAC R-191 to PREZZ and hold.		
ATIS <b>133.675 251.05</b>	POTOMAC APP CON <b>128.0 335.5</b>	ANDREWS TOWER <b>118.4 349.0</b>	GND CON <b>121.8 275.8</b>	CLNC DEL <b>127.55 285.475</b>	CPDLC

# CATEGORY II ILS-SPECIAL AIRCREW & AIRCRAFT CERTIFICATION REQUIRED

 † For aircraft not equipped with TACAN or suitable  
RNAV system with GPS: Fly hdg 190°, maintain  
2000 expect RADAR vectors.


## ILS RWY 19R (CAT II)