

VOR/DME LYH	Rwy Idg	7100
109.2	TDZE	938
Chan 29	Apt Elev	938

APP CRS  
207°

VOR RWY 22

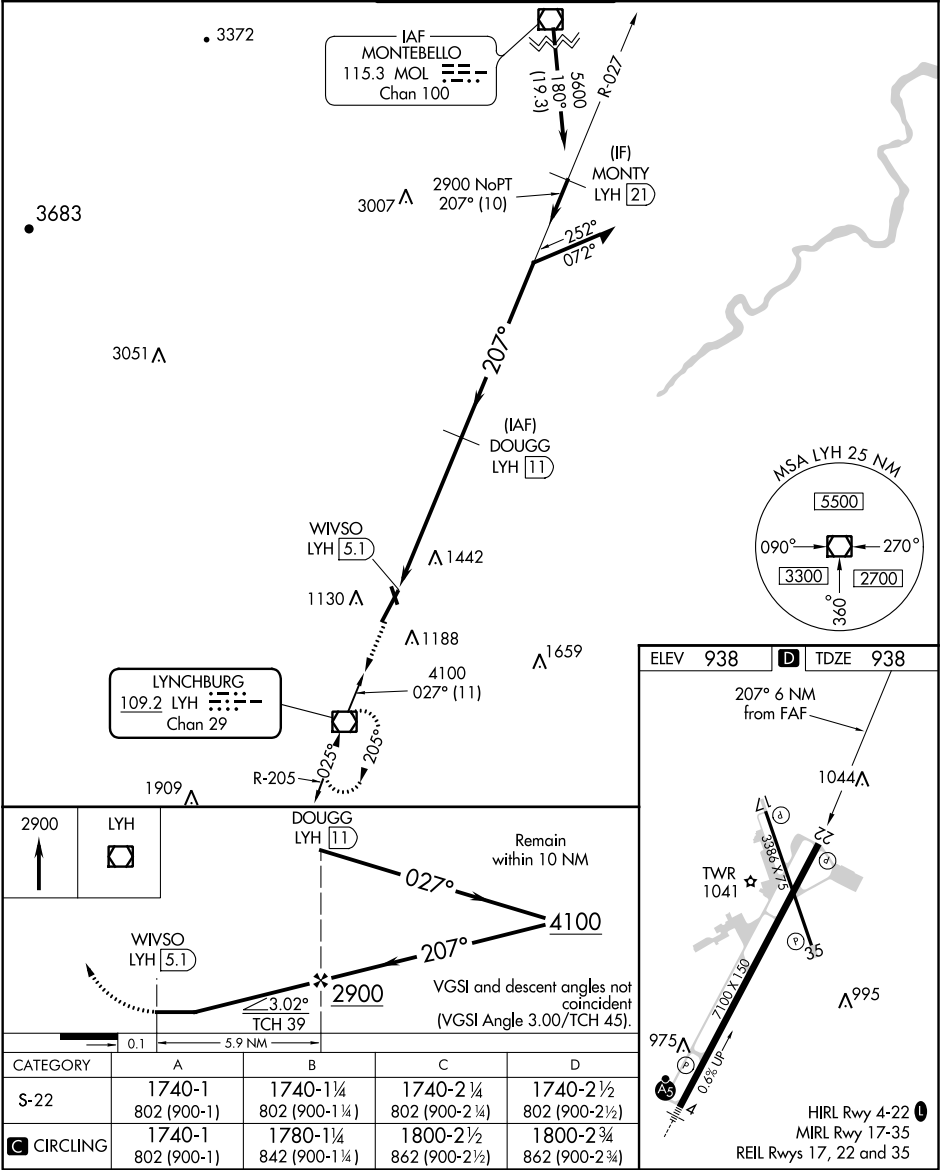
LYNCHBURG RGNL/PRESTON GLENN FIELD (LYH)

DME required.

▼ Rwy 22 helicopter visibility reduction below 3/4 SM NA.  
▲ Circling Rwy 17 NA at night.

MISSED APPROACH: Climb to 2900  
direct LYH VOR/DME and hold.

ATIS 119.8	ROANOKE APP CON 135.0 254,325	LYNCHBURG TOWER ★ 127.65 (CTAF) 257.8	GND CON 121.9	UNICOM 122.95
---------------	----------------------------------	--	------------------	------------------



NE-3, 03 DEC 2020 to 31 DEC 2020

NE-3, 03 DEC 2020 to 31 DEC 2020

VOR RWY 22