

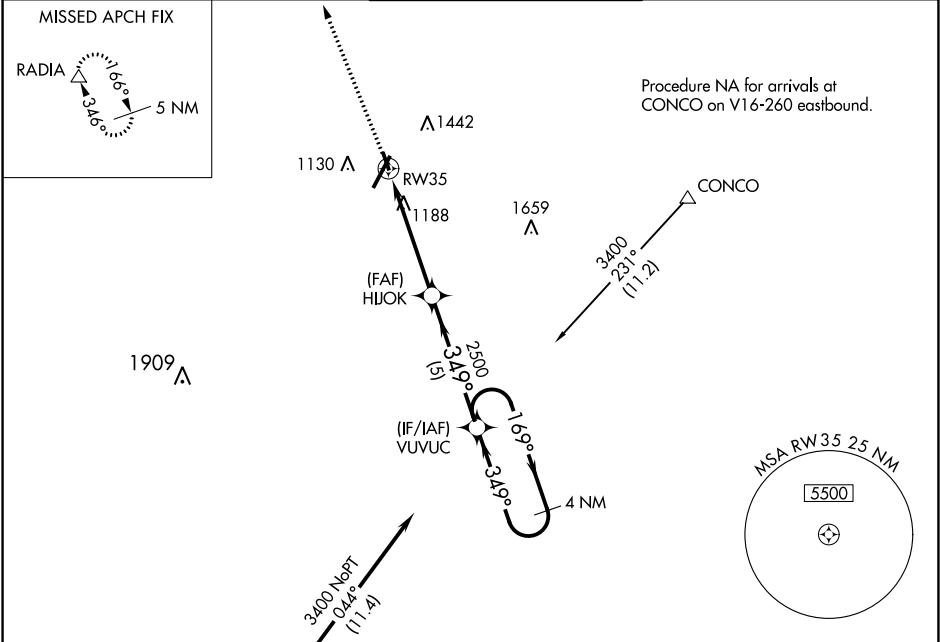
WAAS CH 93634 W35A	APP CRS 349°	Rwy Idg TDZE 933 Apt Elev 938	3386
--	------------------------	---	-------------

RNAV (GPS) RWY 35

LYNCHBURG RGNL/PRESTON GLENN FIELD (LYH)

RNP APCH.	MISSED APPROACH: Climb to 4900 direct RADIA and hold.
Circling Rwy 17 NA at night. Rwy 35 helicopter visibility reduction below 3/4 SM NA.	

ATIS 119.8	ROANOKE APP CON 135.0 254.325	LYNCHBURG TOWER ★ 127.65 (CTAF) 0 257.8	GND CON 121.9	UNICOM 122.95
----------------------	---	---	-------------------------	-------------------------



ELEV 938 TDZE 933				
Procedure NA for arrivals at SYCAM on V469 southbound.				
4900 	RADIA 	VGSI and descent angles not coincident (VGSI Angle 4.00/TCH 17).		
*LNAV only	RWY 35 1.3 NM to RW35			
*1.3 NM to RW35				
RW35 1.3 NM				
3.5 NM				
5 NM				
CATEGORY	A	B	C	D
LP MDA	1480-1	547 (600-1)	NA	
LNAV MDA	1500-1	567 (600-1)	NA	
CIRCLING	1660-1 722 (800-1)	1780-1 1/4 842 (900-1 1/4)	NA	

HIRL Rwy 4-22

MIRL Rwy 17-35

REIL Rwy 17, 22 and 35

RNAV (GPS) RWY 35

NE-3, 03 DEC 2020 to 31 DEC 2020

NE-3, 03 DEC 2020 to 31 DEC 2020