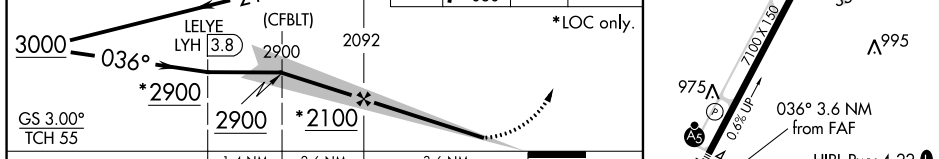
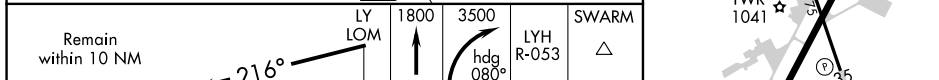


ILS or LOC RWY 4
LYNCHBURG RGNL/PRESTON GLENN FIELD (LYH)

MISSED APPROACH: Climb to 1800 then climbing right turn to 3500 on heading 080° and on LYH VOR/DME R-053 to SWARM INT/LYH 20 DME and hold.

△3051



CATEGORY		A		B		C		D	
S-ILS 4 **		1105/24 200 (200-½)							
S-LOC 4		1320/24 415 (400-½)		1320/24 415 (400-¾)		FAF to MAP 3.6 NM			
CIRCLING	1660-1	1780-1¼		1800-2½		1800-2¾		Knots	60 90 120 150 180
	722 (800-1)	842 (900-1¼)		862 (900-2½)		862 (900-2¾)		Min:Sec	3:36 2:24 1:48 1:26 1:12

NE-3, 03 DEC 2020 to 31 DEC 2020