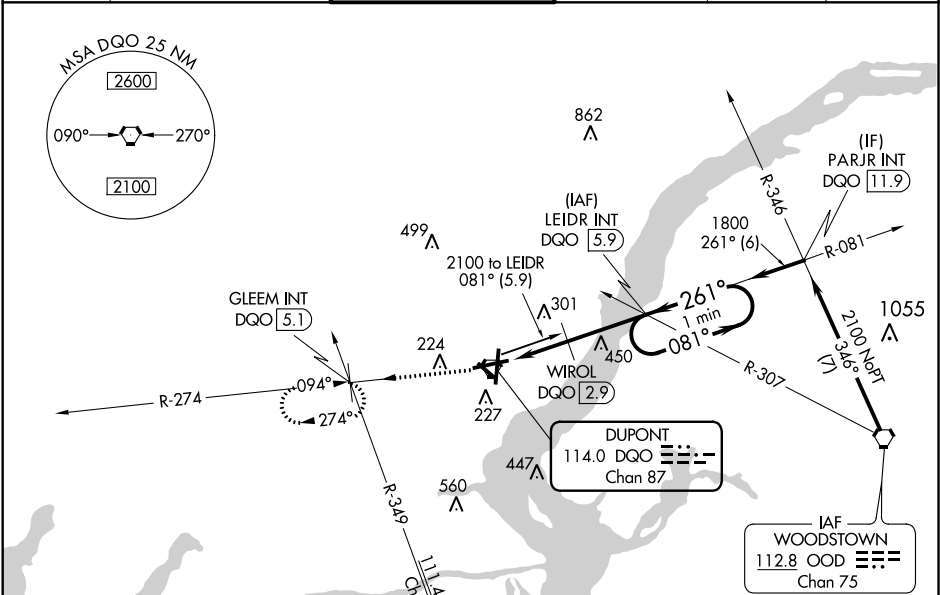


VORTAC DQO	APP CRS	Rwy Idg	7000
114.0	261°	TDZE	72
Chan 87		Apt Elev	80

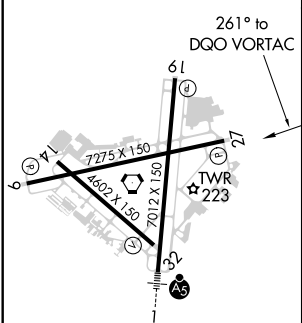
VOR RWY 27
NEW CASTLE (ILG)

<p>⚠ Helicopter visibility reduction below ¾ SM NA. When local altimeter setting not received, use Philadelphia Intl altimeter setting and increase all MDA 60 feet; increase S-27 Cat B visibility ¼ mile and increase S-9 Cats C and D visibility ½ mile; increase Circling Cats B and D visibility ¼ mile and increase Circling Cat C ½ mile; WIROL FIX minimums S-27 increase Cats C and D visibility ¼ mile, and increase Circling Cat C ½ mile.</p>	<p>MISSED APPROACH: Climb to 2000 on DQO VORTAC R-274 to GLEEM INT/DQO 5.1 DME and hold.</p>
---	--

ATIS 123.95	PHILADELPHIA APP CON 118.35 323.1	WILMINGTON TOWER ★ 126.0 (CTAF) 352.05	GND CON 121.7 275.8	CLNC DEL 119.95	UNICOM 122.95
----------------	--------------------------------------	---	------------------------	--------------------	------------------



ELEV 80	D	TDZE 72
---------	---	---------



REIL Rwy 9, 27 and 19	1
HIRL Rwy 9-27 and 1-19	1
MIRL Rwy 14-32	1
FAF to MAP 5.9 NM	
Knots	60 90 120 150 180
Min:Sec	5:54 3:56 2:57 2:22 1:58

2000	GLEEM INT	LEIDR INT DQO 5.9	One Minute Holding Pattern
DQO R-274	WIROL DQO 2.9	261°	1800
DQO VORTAC	800*	3.00 TCH 54	
0.6	2.3	3 NM	
CATEGORY	A	B	C D
S-27	800-1 728 (800-1)	800-2 728 (800-2)	
CIRCLING	800-1 720 (800-1)	800-2 720 (800-2)	800-2 720 (800-2 ¼)
WIROL FIX MINIMUMS (DME REQUIRED)			
S-27	560-1 488 (500-1)	560-1 488 (500-1 ½)	
CIRCLING	560-1 480 (500-1)	600-1 520 (600-1 ½)	640-2 560 (600-2)

NE-3, 03 DEC 2020 to 31 DEC 2020

NE-3, 03 DEC 2020 to 31 DEC 2020